



Levitation Sledlines of Hyperborea

The Sámi people of the Scandinavian Arctic region have adhered to ancient shamanic cultural traditions for many thousands of years that have become a subject of great interest among modern anthropologists and ethnologists. Medical knowledge relating to the neurological benefits of hallucinogen use by Sámi healers was suppressed for decades, *foreshadowing a broader suppression of the hi-tech origins of Sámi sleds.*

As seen among Arctic societies in Asia and America, the Sámi used wooden sledges drawn by reindeer as a primary means of transportation. In contrast to other Arctic groups, the Sámi have maintained their set of sophisticated cultural practices inherited from the Atlantean civilization that once colonized the far north.



Reindeer-drawn wooden sled
Sámi culture, Scandinavia

In the Paleo-Sanskrit language of Atlantis, the votive name 'Sámi' signifies "Knowledge waxing", equating the accumulation of knowledge to the waxing or increasing amplitude of planetary infrasound resonance that coordinates the developmental phases of conscious awareness among human beings living on Earth.

Sámi cultural traditions reflect an ancestral connection to the former Atlantean colony of Hyperborea, as described by various authors in ancient times. Ancient literary references to the lands of Hyperborea have been preserved in the works of the Greek historian Herodotus, who speculated about the region multiple times and even mocked the limited geographic knowledge of other historians who attempted to identify it:

"...I laugh when I see that, though many [authors] before this have drawn maps of the Earth, yet no one has set the matter forth in an intelligent way..." (Histories 4.36)

In another passage, Herodotus offers speculation that Hyperborean lands extend to the Arctic Sea, stating "Beyond these (he said) live the one-eyed Arimaspians, beyond whom are the Grypes (Griffins) that guard gold, and beyond these again the Hyperboreans, whose territory reaches to the sea." (Histories 4.13).

In Greek mythology, Hyperborea ("beyond the north wind") was a mythical, paradisaical land located in the far north, believed to be inhabited by a blessed people who worshipped Apollo, experienced eternal sunshine, and lived for 1,000 years. It was considered a land beyond the reach of Boreas, the harsh north wind, and is often associated with purity and perfection. Key aspects of the Hyperborea subject include:

- Mythological Context: Greeks believed the Hyperboreans lived beyond the northern mountains, often associating them with lands like early Scythia or regions north of Greece.
- The Hyperborean People: They were considered worshippers of Apollo, often sending gifts via messengers to the Greek island of Delos.
- Symbolism: It represented an idyllic, peaceful land, often linked with a 'lost paradise' in esoteric traditions.
- Interpretations: While the subject is widely regarded as mythological, some scholars suggest the Hyperborea mythos originated from ancient trade routes (such as for amber) from the Baltic region. (Wiki)



Ancient descriptions of the idyllic Hyperborean climate sound implausible, yet closely correspond to trance statements made by the famous psychic medium Edgar Cayce and the known physics of *weather control via atmospheric ionization*. Statements preserved in the Bible allude to the same technological form of atmospheric pacification: "...[F]or the Lord God had not caused it to rain upon the Earth,... But there went up a mist from the Earth, and watered the whole face of the ground." (*Genesis 2:5,6*).

During the Atlantean Era, localized heating was achieved at vortex points in the Arctic via high-intensity acoustic focusing of infrasonic roaring amplified by the world's pyramid network, which fully regulated the movement of atmospheric moisture. Severe weather was effectively mitigated, instead raising a fine mist.

The accuracy of ancient folklore asserting the existence of an inhabited paradise in the far north is also strongly supported by a series of highly unusual events that took place several weeks before the July, 1947 UFO crash at Roswell, New Mexico. In May of 1947, an even larger spacecraft had crashed on the Norwegian island of Spitzbergen, which was then collected by a US military retrieval operation involving recovery of the corpses of 17 deceased ET humanoids found in the debris field of the ruptured spacecraft:

A news story indicated that British scientists were digging up a strange aircraft that had crashed in an isolated area. Military authorities confirmed the extraterrestrial origin of the craft and indicated that they had found 17 bodies in the wreckage. Military authorities quickly silenced the story. (Rosales, A, 2009)

This very brief incident report regarding the 1947 Spitzbergen UFO crash reveals a notable pattern of both US and Soviet military activity in the immediate area of Spitzbergen leading back to World War II. For years prior to the Spitzbergen UFO crash incident, US Navy vessels had monitored significant UFO activity in the ocean and atmosphere above the northernmost areas of Svalbard.

Soviet coal mining operations had been used for many years as a cover story for maintaining a covert military presence on Spitzbergen. The Norwegian government was pressured by the USSR into a shared defense agreement in 1947, just 2 months before the Spitzbergen UFO crash. These clandestine military maneuvers suggest the monitoring of UFOs in that area had become a high priority for both the US and USSR after WWII. Many factors directly implicate US Navy missile strikes were responsible for the crash.



Arctic atoll structure
Geopolymer sandstone
Hyperborea - Moffen Isl, Svalbard

The timing of the Spitzbergen UFO shoot-down occurring just weeks before the Roswell craft shoot-down –in addition to 2 other induced crashes that month in New Mexico– cannot be overlooked. These events are closely related events, directly resulting from the deployment of more advanced radar systems to US Navy vessels that enabled tracking, targeting and successful missile strikes against the adversarial UFOs.

UFO surveillance operations were conducted around Spitzbergen using network of military platforms that included aerial, sea-based and submarine observations, and eventually narrowing the focus of maritime operations on the suspicious site of an atoll-like lagoon structure situated 9 miles off northern Spitzbergen.

Recent investigations have documented the artificial origin of oceanic atoll structures in both the Indian and Pacific Oceans, as well as atoll-type basalt structures in North America's Lake Superior. Replicating the general form of thousands of artificial islands constructed by temple builders in Atlantis, Saneid and Lemuria, the atoll structure off Moffen Island was cast layer-by-layer in geopolymer sandstone (above).

The unusual Arctic atoll structure known as Moffen Island displays nearly vertical walls rising ~12 m from the seafloor plateau at -8 to -10 m depth, forming a circular island that provides a protective haul-out site for large walrus populations endemic to the region. A wide horizontal ledge outlines the entire site, which still preserved the vestigial remains of parallel trackways forming a levitation sled circuit around the island.

When observed from a high altitude perspective, the smooth contours of Moffen Island were designed to resemble the head of an iconic Arctic bird (below). The stylized profile depicts the distinctive characteristics of the beak, head and neck of a *ptarmigan*, an Arctic-adapted member of the grouse family (Phasianidae).



Karri levitation circuit temple
Hyperborea - Moffen Isl, Svalbard

Karri levitation sledline temple and underwater UFO base at Moffen Island, off Spitzbergen, Svalbard (80.02347°N, 14.51463°E, above) is 3,493 miles from the Great Pyramid; comprising 14.03% of Earth's mean circumference ($7/_{50}$). This resonant distance reflects the values of Fibonacci #1301 (3,494.90... x 10^{-269}) in miles and Fibonacci #567 (14.01... x 10^{-118}) in percent, with exact placement at 80 North latitude.

The high-precision geometric relationship demonstrated between the Arctic site of Karri circuit temple and the Orion Pyramids of Giza, Egypt is also reflected by Fibonacci distance alignments with every other ancient pyramid and temple site throughout the world, conforming to the spherical mandala of resonance. Quartz sand grains convert incident ULF waves into a localized EM field by piezoelectric transduction.

'Karri' is the Paleo-Sanskrit name for the male rock ptarmigan; composed of a pair of hieroglyphs reading: **kar ri**, meaning "Works (of the) song." This enigmatic phrase describes the planetary 'Om' (or 'Aum') song of infrasound resonance driven by piezoelectric transduction of the Orion Pyramid Complex of Giza, Egypt.

The Svalbard rock ptarmigan (*Lagopus muta hyperborea*) is the only land-dwelling bird to stay in the high Arctic region of Svalbard year-round, and holds a special place in ancient cultural traditions of the Sámi. Seasonal cycles were symbolically associated with seasonal variations in the gaits of rock ptarmigans:

The ptarmigan's 'lagopus muta' small steps in winter time and its longer steps when days get brighter, does not only tell us about the ptarmigan movement through the seasons. It also tells about of Sámi concept of nature, the days get longer because of the steps of the bird, not the other way around. The ptarmigan is also a symbol for womanly beauty, describing ancient perspectives on women's attraction, very different from today's fashion.ⁱ

The elegance of the rock ptarmigan's white winter plumage draws an obvious association with spiritual purity, while the seasonal variation in plumage coloration (mottled brown during the summer versus white in winter) mirror the Sámi's intimate connection to the dynamic, cyclical changes of the Arctic landscape.



Rock ptarmigan, male
Lagopus muta hyperborea

The Paleo-Sanskrit use of rock ptarmigan or karri symbolism emphasizes the ancient Sámi culture's skillful adaptation to the extreme Arctic environment. Ptarmigans are well-suited for survival in harsh climates, possessing specialized physiological features that include feather-covered nostrils for digging in the snow and large, feathered feet which act much like snowshoes to increase weight distribution on the snowpack.

During mating season, male ptarmigans display enlarged, red skin flaps called supraorbital combs to attract females. Rock ptarmigans create a shallow ground nest in preparation for a 3 week incubation period, laying up to 12 eggs per clutch –with chicks leaving the nest within 6-12 hours of hatching. The strong independence of ptarmigan chicks in the Arctic tundra reinforces their association with resilience.

Ptarmigan symbolism was woven into textile patterns and painted on the skins of ceremonial hand drums, conveying a wide range of symbolic associations related to the shamanic cosmivision of the Sámi culture:

In Norwegian and Sámi culture, the ptarmigan (specifically the Svalbard rock ptarmigan, or Svalbardrype) symbolizes endurance, quiet tenacity and arctic harmony. Often viewed as a tundra guardian, its presence in folklore, joiks (songs), and traditional drumming signifies resilience against harsh Arctic conditions and represents spiritual protection and a deep connection to nature. The ptarmigan is an essential figure in both the spiritual and daily life of the Sámi people as a vital food source, bridging the human, animal, and spiritual worlds.

Recurring themes and key aspects of rock ptarmigan symbolism expressed by ancient Sámi traditions include:

- Arctic Resilience & Adaptability: As a permanent resident of the high Arctic, the ptarmigan is a year-round symbol of survival in extreme environments.
- Sami Traditions & Symbolism: In Sámi culture, the ptarmigan is connected to the *noaidi* (shamanic) tradition, sometimes representing spiritual, protective powers. Its movements are historically connected to the changing of seasons, with its footsteps believed to usher in longer, brighter days.
- Purity and Camouflage: Its stark change from brown to white plumage represents *spiritual purity* and deep adaptation to the snow-covered landscapes of the Arctic tundra.



Willow ptarmigan, female
Lagopus lagopus

- Cultural Icon: Known as the Svalbardrype, it is deeply ingrained in the natural heritage of Northern Norway. The ptarmigan is also sometimes used as a symbol of gentle beauty in traditional Sámi perspectives.
- Symbol of Nature & Seasonality: The ptarmigan's distinct plumage changes –white in winter and mottled brown in summer– mark the shift between seasons.
- Shamanic Significance: In Sámi shamanism, birds, including the ptarmigan, are portrayed on traditional drums (meavresgárr) as helpers or assistants to the *noaidi* (shaman).
- Cultural Tradition & Survival: The bird has long been a staple food source, particularly crucial for survival during winter, reflecting its role in sustaining life in the far north.
- Symbol of Beauty & Song: The bird is honored in traditional songs and storytelling, sometimes linked to themes of romance and beauty.
- Language of Nature: The ptarmigan's call is understood as part of *rievssatgiella*, or the "ptarmigan's language", representing an intimate knowledge of the natural world. (Wiki)

The ptarmigan profile design of Karri levitation circuit temple at Mofen Island was meant to convey the same set of complex cultural associations maintained through the descendant culture of the Sámi.

Karri levitation circuit temple's zoomorphic design shows a similar iconic depiction of the head of a bird that was previously identified in the context of a levitation circuit temple that encloses Estanque Island, off Mexico's Baja Peninsula. Both of these Atlantean constructions –off the coasts of Baja and Spitzbergen– show a highly conspicuous contrast to the rugged, volcanic peaks that sheer the landscape in both areas.

Baja's Karakara circuit temple wraps around the shores of a small island, whereas the enclosed lagoon format of Karri circuit temple off Spitzbergen closely replicates the design plans of limestone atolls in the Indian and Pacific Oceans. Despite the longstanding contention of geologists that such structures are natural geological formations, many convergent lines of evidence decisively prove these lagoons are architectural complexes designed for the high-speed transit of aurichalcum ($\alpha\text{-Ti}_3\text{Au}$) levitation sleds.

The miles-long, gracefully curving arcs of the submerged temple structure were planned and built for facilitating high-velocity transport via magnetic levitation. The exposed surface platform of the sled circuit temple was inset with many rows of paired grooves for guiding the paths of toboggan-like sled platforms that hovered 10" above the synthetic stone trackways. The trackways' special metallic composition includes traces of ferromagnetic and paramagnetic metals such as nickel (Ni), iron (Fe), titanium (Ti) and manganese (Mn), as well as traces of lanthanide series elements (La, Ce, Nd, Dy, Gd, Eu, Yb, Lu, etc...).



Karri levitation circuit temple
Hyperborea - Mofen Isl, Svalbard

Metallic nanoparticle blends act as dopants to convert the artificial stonework into an exotic metamaterial classified as an unconventional superconductor –*when hydrated by absorbed water content in the stone*. The formation of metal hydrides within the stonework facilitates a form of pulsed superconductivity, under the crucial influence of incident acoustic waves that exert a rhythmic pressure on the stone.

The critical effect of magnetic levitation was achieved by the proper application of the Atlantean superalloy *aurichalcum*: a red-gold intermetallic compound ($\alpha\text{-Ti}_3\text{Au}$) rediscovered in 2018 by this author. Thick sled platforms with upward-curving fronts were manufactured with multiple rows of seating for the driver and passengers of the high-speed floating vehicle, which ran almost silently –emitting only a slight humming.

The levitation technologies of ancient Hyperborea formed the basis for modern-day religious mythology relating to the Christmas holiday, when Santa Claus delivers gifts to all the children by flying from rooftop to rooftop on his merry way. The fanciful legend of Santa Claus and his flying reindeer sleigh is actually rooted in the reality of Atlantean rapid transport systems that employed hi-tech 'flying' levitation sleds.

Many ethnographers have connected the flight of Santa Claus and his red outfit with shamanic out-of-body experiences attributed to trance hallucinations induced by the consumption of a red-and-white mushroom:

The connection between the Sámi people—the indigenous reindeer herders of Arctic Scandinavia—and the iconography of Santa Claus's flying sleigh is a blend of cultural history, shamanic tradition, and modern commercial marketing. While Santa is an amalgamation of many traditions, the Sámi culture is widely believed to have influenced the 'Arctic' elements of his mythos, such as reindeer, the snowy Lapland landscape, and a magical journey. Here are the key connections between the Sámi people and the flying sleigh theme:



Santa Claus iconography
Sámi culture, Scandinavia

- Shamanic 'Flight' and Psychoactive Mushrooms: The most profound (and theoretical) connection links Santa to Sámi shamans. These shamans would consume *Amanita muscaria* (fly agaric), a red-and-white hallucinogenic mushroom, during winter solstice rituals, enabling shamanic flight, intense visions, and spiritual journeys.
- Reindeer and *Amanita Muscaria*: Sámi herders observed that reindeer loved eating these red-and-white mushrooms, which made them leap around, appearing as if they were dancing.
- The Shamanic Sleigh Ride: The shamans often visited homes during winter solstice to offer gifts of healing, traveling in reindeer-drawn sleighs across the snow.
- Chimney Entry Mythology: In some tales, if a home was sealed due to heavy snow, the shamans would enter through the smoke hole (chimney) to deliver these sacred, dried mushrooms, which were sometimes hung to dry on pine trees.
- Red and White Costumes: The traditional red-and-white attire of the shaman (to mimic the mushroom) is often cited as the origin of Santa's suit, as well as the practice of placing gifts under the evergreen tree (a nod to where the mushrooms grow).

This standard ethnographic interpretation of Sámi cultural associations highlights the shamanic aspect of Santa Claus mythology, while overlooking a more significant *technological* connection. Comprehensive modification of coastlines in every region of the world confirms the existence of coastal superhighways designed for the high-speed conveyance of *actual flying sleds* manufactured by the Atlantean civilization.

All the telltale signs have been left in the form of ribbons of artificial stonework blending organically into the post-glacial landscapes. As with artificial circuit temples in North America's Lake Superior, geologists cannot explain how these narrow, elevated ridgelines were not entirely crushed and wiped away by the immense weight of thick glacial sheets that completely covered these regions >11,000 years ago.

The remains of many narrow isthmuses connecting islands in the Svalbard Archipelago can be seen at various islands where the snow cover has melted (below). The coastlines of natural volcanic islands were modified for the installation of trackways calibrated for the rapid transit of levitation sleds of different sizes.



The small scale of these isthmus constructions would leave many to dismiss the possibility that they ever served an ancient hi-tech function, yet this conclusion remains the only logical explanation for these man-made geopolymer stone ridgelines (above). In fact, the diminutive scale of these structures matches the small size of the gnome humanoid of Atlantis; a psychoacoustic society that integrated populations of giants, giant hybrids, humans, hobbits, leprechauns, gnomes and fairy humanoids of diverse ET species.

The all-inclusive social structure of Atlantis was generally described in a psychic reading by Edgar Cayce, given during a Life Reading delving into the past lives of a male client on April 29, 1932 (Reading 364-11):

Q: Please give a few details regarding the physiognomy, habits, customs and costumes of the people of Atlantis... A: These took on *many* sizes as to stature, from that as may be called the midget to the giants –for there were giants in the Earth in those days, men as tall as (what would be termed today) ten to twelve feet in stature, and in proportion –well proportioned throughout.

To this day, a network of subterranean complexes still uses the same type of high-speed transportation system that once extended to sites on the surface, linking many conjoined islands of ancient Hyperborea during that remote epoch which has been erroneously classified as the 'Late Paleolithic Period'.



Levitation sledline temple
Hyperborea - Grahuken, Svalbard

Geopolymer trackways running along the coastal zones of Svalbard present a sharp contrast to nearby mountains, as observed at Grahuken (above). The Norwegian place names of many sledline temple sites in Svalbard are also composed of lengthy Paleo-Sanskrit votive phrases that consistently praise *genetic purification conferred by γ -rays from radium-sulfide (RaS) nanoparticles flowing within the bloodstream*:

Place Name	Hieroglyphs	Translation
Svalbard	s va l ba r d	"From within, certainly, (the) essential lustre (of the) turning unending"
Spitzbergen	s pi t z be r g en	"From within; moving protection from within; activity (of) turning spark (of) That"
Grahuken	g ra hu k en	"(The) spark granting (the) receptive Virgin, (of) That"
Elvetangen	el ve ta n g en	"(The) Divine knowing; endowing (of the) essential spark (of) That"
Straumtangen	s tr aum ta n g en	"From within (the) eye (of) Aum; endowing (of the) essential spark (of) That"
Sarstangen	sa r s ta n g en	"Knowledge (of) turning from within; endowing (of the) essential spark (of) That"
Mushamna	mu s ha m na	"Mu: from within Those (of the) quick Void"
Bjonahamna	b i on a ha m na	"To sound This ascent, ah, (of) Those (of the) quick Void"
Brandalpynten	b ra n da l p y n t en	"To sound (the) granting (of) essential giving; essence (of) inner joy imperishable; essence (of the) protection (of) That"

These exceedingly surreal landscapes are not the work of glacial deposition or moraine formations, but embody the architectural masterworks of the Atlantean high civilization in Hyperborea. The fine, graceful beauty of the sledline arcs can be fully appreciated from the high-altitude aerial perspectives of birds.

There exist a great number of submerged levitation sledline temples distributed throughout Svalbard that do not display the overt zoomorphic imagery of birds and other animals, instead taking on somewhat less recognizable iconography. Among these include sledline temples designed as the face, nose, tooth, fang, tongue or other body parts of leprechaun and gnome ET humanoids; as an octopus, maple seeds or flight feathers; as a cresting wave or a series of cresting waves; or as a knife blade cutting flesh.

Geopolymer sandstone trackways
Hyperborea - Grahuken, Svalbard



Geopolymer sandstone trackways
Hyperborea - Grahuken, Svalbard



Levitation sledline temple
Hyperborea - Thorkelsenholm, Svalbard



Octopus motif
Hyperborea - Kobbefjorden, Svalbard



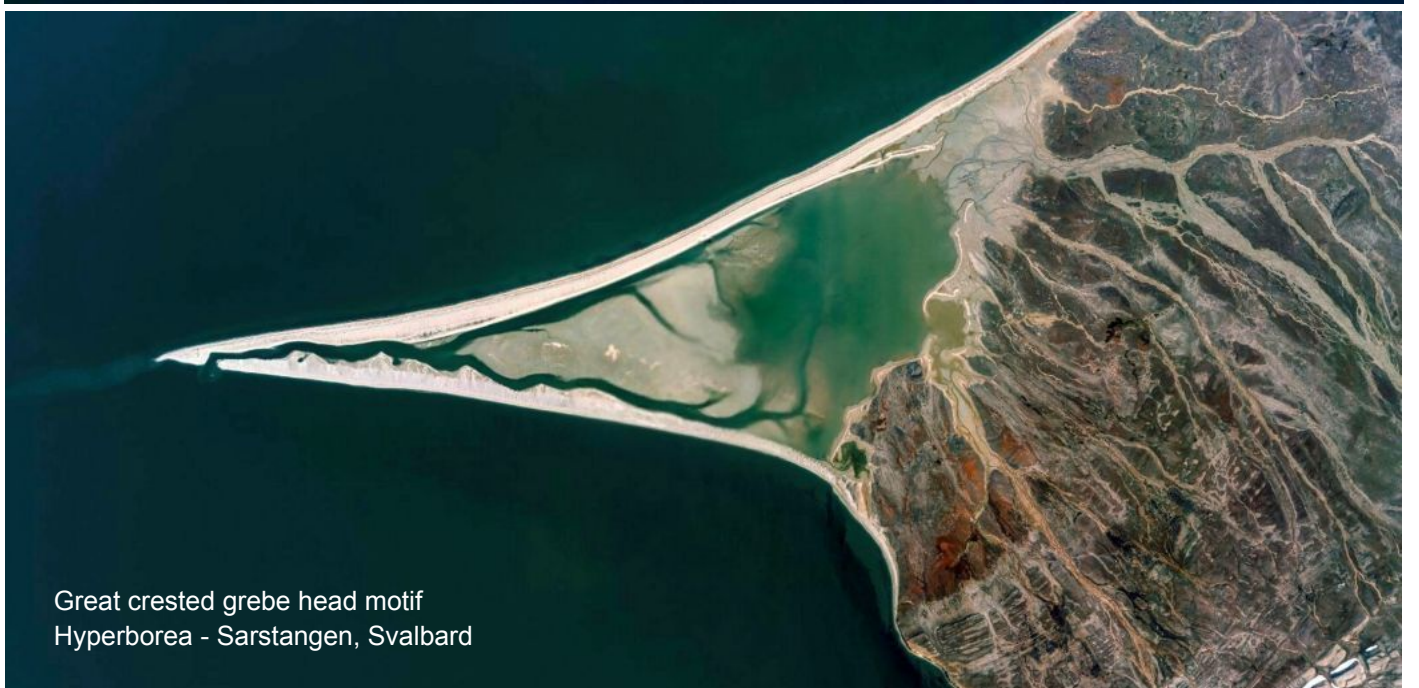
Levitation sledline temple
Hyperborea - Mushamna, Svalbard



Geopolymer sandstone façading
Hyperborea - Mushamna, Svalbard



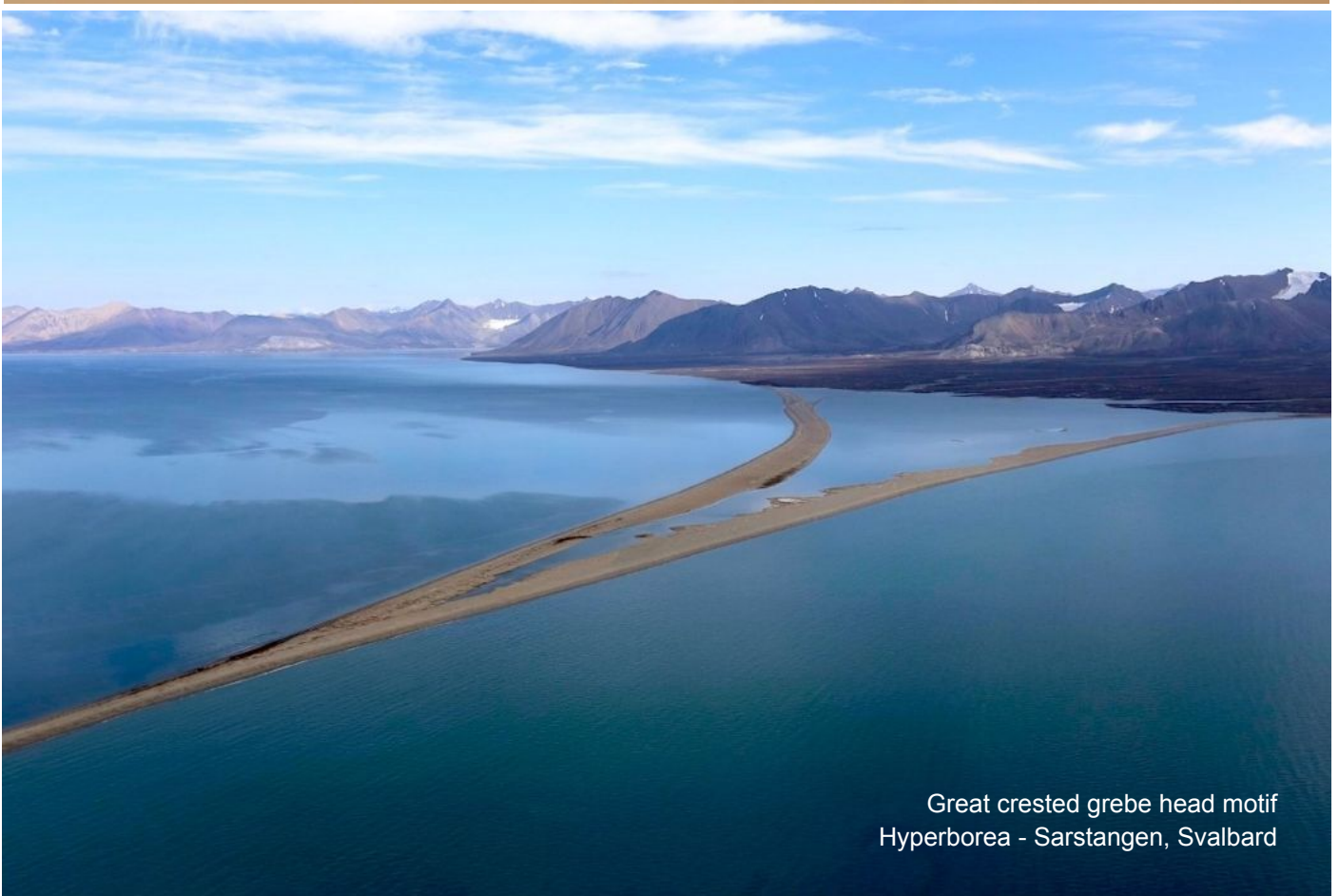
Wavecrest motif
Hyperborea - Straumtangén, Svalbard



Great crested grebe head motif
Hyperborea - Sarstangen, Svalbard



'Jivha' glyph; "tongue" motif
Hyperborea - Svalbard



Great crested grebe head motif
Hyperborea - Sarstangen, Svalbard



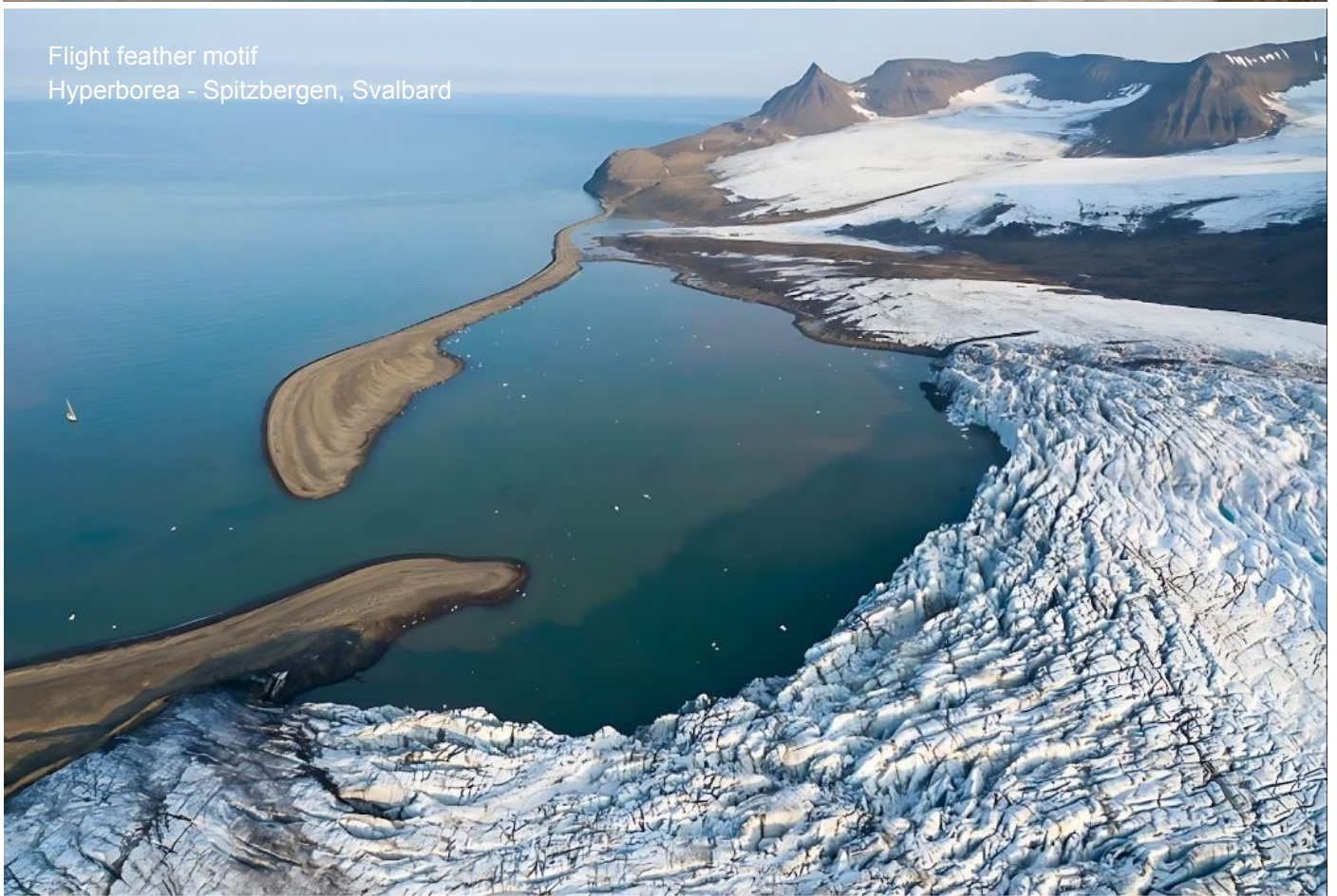
Maple seed motif
Hyperborea - Ebelftoftodden, Svalbard



Leprechaun ET nose motif
Hyperborea - Svensksundham, Svalbard



'Kar' glyph; "works" motif
Hyperborea - Brandalpynten, Svalbard



Flight feather motif
Hyperborea - Spitzbergen, Svalbard



Nimerigar fang motif
Hyperborea - Elvetangen, Svalbard

At the coastal site of Elvetangen, Svalbard, a sledline temple forms an artificial point enclosing a river delta before it's effluent disgorges into the sea. This particular temple structure closely replicates the design of sledline temples in many other regions of the world, depicting the fang of a nimerigar ET gnome humanoid. Fang symbolism of this kind is echoed by temple depictions of vampire bats, owl talons and shark teeth.

Another conspicuous sledline temple site is preserved in northeast Wijdefjorden, on the Spitzbergen coast. Key placement of a coastal sledline temple was intended to resemble a human nose (opposite, above), giving the impression of a woman's face seen in a near profile view turned slightly away from the observer.

The sharp geometry of another temple was designed with the slightly curving contour of a triangular knife blade, a visual impression which is reinforced by the dispersion of trackways. Asidhara levitation sledline temple and underwater UFO base near Bjonahamna, Svalbard (opposite, below) was designed with a short, steep downhill sections as the sleds descend from the main triangular platform. This feature is rarely seen, and represents a clear example of downhill levitation sledding at a safe angle of descent that can be studied in detail using airborne LiDAR site mapping. 'Asidhara' is the Classical Sanskrit word for "blade".



Woman's nose motif
Hyperborea - Lakssjøen, Svalbard



Knife blade cutting motif
Hyperborea - Bjonahamna, Svalbard



Leprechaun nose motif
Hyperborea - Fosterneset, Svalbard



Leprechaun nose motif
Hyperborea - Wijdefjorden, Svalbard



Leprechaun nose motif
Hyperborea - Woodfjorden, Svalbard

Another commonly observed anthropomorphic design motif represents the distinctive pointed nose of the quadrupedal leprechaun ET humanoid species. Rendered in the fine contours of many different levitation sledline temples spread across the Arctic, the pointed nose iconography of leprechauns is most prevalently seen among the sledline temples of Norway's Svalbard Islands and Russia's Novaya Zemlya Island.

Yaksha-Nasika levitation sledline temple and underwater UFO base at Woodfjorden, Svalbard (79.5344°N, 13.834169°E, above) is located 3,464 miles from the Great Pyramid, comprising 13.916% of Earth's mean circumference ($^{87}/_{625}$). This resonant distance reflects the values of Fibonacci #722 ($3,464.10... \times 10^{-148}$) in miles and Fibonacci #1390 ($13.910... \times 10^{-290}$) in percent, ensuring efficient ULF wave reception at the site.

The descriptive site name 'Yaksha-Nasika' is a literal Sanskrit translation of 'gnome-nose'. This smoothly contoured geopolymer megastructure stands out from the typically rugged Svalbard coastlines, having been architecturally designed to evoke the impression of an ET humanoid face. Levitation sled trackways can be readily seen as a set of dozens of parallel, latitudinal lines running along the north side of the complex, representing the bridge of the pointed nose. Nasal structures of the leprechaun ETs have a sharp point and narrow bridge, whereas those of the nimerigar ET gnomes show a wide, raised nasal bridge.



Great crested grebe diving motif
Hyperborea - Cape Wijk, Svalbard

While many temple designs are highly stylized to give a subtle impression of a particular animal, this spectacular example at Cape Wijk, Svalbard leaves absolutely no doubt that the technological hands of ancient civilization were responsible for the gestural beauty of the diving bird image. Seen from an aerial perspective, the temple resembles the white neck and spiky crest of a diving bird called a *grebe*.

Dopingar levitation sledline temple and underwater UFO base at Cape Wijk, Svalbard (78.590700°N, 15.246191°E, above) is located 3,396 miles from the Great Pyramid; comprising 13.64% of Earth's mean circumference ($^{341/2500}$). This resonant distance interval reflects the values of Fibonacci #454 (3,395.49... x 10⁻⁹²) in miles and Fibonacci #677 (13.650... x 10⁻¹⁴¹) in percent, ensuring efficient network receptivity.

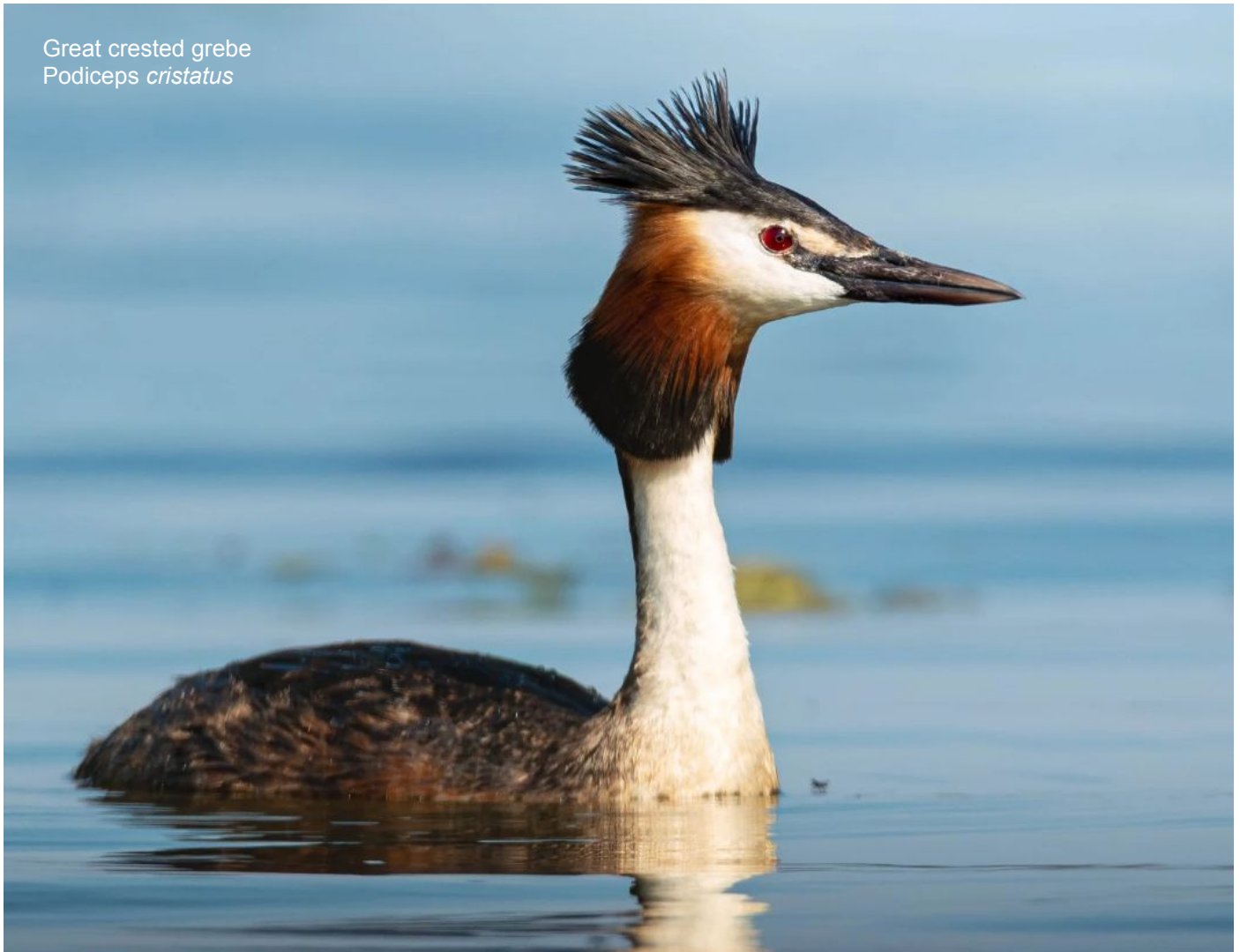
This cartoon-like rendering of the head, neck and wings of a great crested grebe (*Podiceps cristatus*, opposite) in a diving position shows a graceful composition that is certainly not a byproduct of natural geological activity. While most geologists and archeologists throw their hands in the air, shrug and move on, the Hyperborean origin of this site and many others in the Arctic certainly merits further investigation.

From an ecological standpoint, the many positive environmental impacts of Hyperborean architectural projects are still evident today; providing prime nesting and hunting habitat for migratory birds every year.

In the Sámi languages of Scandinavia, the word 'doppingar' signifies "grebe" –used here as a votive name for the isthmus sledline temple at Cape Wijk, Svalbard, which was designed to replicate the profile of the majestic bird as it dives below the waves to chase after fish. The marine diving motif references the trans-medium capability of Hyperborean spacecraft, transiting among the *networks of underwater UFO bases*.

The great crested grebe is a seasonal visitor to the Svalbard archipelago that exploits the summertime abundance of marine food sources. With its wild head crest and orange-brown neck plumage, the great crested grebe stands out from other diving birds as an iconic species that was honored in symbolic representations by the levitation sledline temple designers and builders of ancient Hyperborea.

Great crested grebe
Podiceps cristatus



Across cultures, grebes symbolize devotion and partnership, owing to their synchronized courtship dances involving gift exchanges of aquatic vegetation. Grebes are also considered symbols of coordination and teamwork, as both parents share in the duties of nest-building, egg incubation and feeding. Their incredible agility underwater enables grebes to catch small fish, referencing the submarine agility of antigravitic craft.

One of the areas of the world that has received the most suppression of satellite imagery is Russia's Kara Sea region, where the unusual contours of a variety of artificial islands with large central lagoons or with networks of smaller lagoons nestled within the confines of a series of curving levitation sled circuits.

The bird head motif is reiterated several times in the atolls of the Kara Sea, displaying iconic profile views of endemic species including the rock ptarmigan, common murre (or guillemot), white-tailed eagle, Canadian goose, great crested grebe, Arctic tern, Atlantic puffin, and the long-tailed jaeger (or skua).

The design of many Hyperborean circuit temples captures the specific body positions taken by particular birds while undertaking essential survival or mating activities, such as hunting from the air, diving below water, calling or displaying for females. The construction of each of the zoomorphic designs of these Arctic sledline temples exemplifies the Hyperboreans' deep reverence for the biological diversity of Creation.



Arctic tern head motif
Hyperborea - Uyedineriya Island, Russia

The characteristic aerial hunting posture taken by high-diving seabirds served as the inspiration for the design of a levitation circuit temple with multiple levels, cast geopolymer sandstone. Only when viewed from high above, this Arctic atoll replicates a profile view of the downturned head of the iconic Arctic tern.

Kría levitation circuit temple and underwater UFO base at Uyedineriya Island, in the Kara Sea, Russia (77.4915673°N, 82.4621561°E, above) is located 4,967 miles from the submerged Atlant Pyramid off Florida's coast, comprising 19.995% of Earth's mean circumference ($\frac{1}{5}$). This resonant distance interval corresponds to the values of Fibonacci #1407 ($4,967.35... \times 10^{-291}$) in miles and Fibonacci #1185 ($19.992... \times 10^{-246}$) in percent, indicating placement within a nodal vortex of focused infrasound resonance.

Satellite imagery of Uyedineriya Island reveals the clear presence of a set of 3 stepped terraces running around the entire perimeter of this largely submerged temple complex. The atoll's interior lagoon was designed with a shape resembling the black plumage covering the head and crest of the Arctic tern.

The vestiges of a large arrangement of levitation sledlines can still be observed as smoothly diverging trackways that quickly reconverge in the southeast area of the complex, forming the profile of a beak. The remarkable consistency of sledline temple imagery extends across many sites throughout Arctic region. Recognizable avian symbolism of this type predominated during the final phase of Atlantis, until 13,000 bp.

In reverence for their amazing endurance through long-distance migrations, Kría circuit temple was laid out as a representation of the head of an Arctic tern (*Sterna paradisaea*, below), with its gaze directed downward in a characteristic pose taken when selecting a target fish before diving at top-speed into the ocean. Paleo-Sanskrit traditions of the Arctic region of Hyperborea have been largely preserved by the customs of the Sámi culture of ancient Scandinavia, which view the Arctic tern as the *Eternal Bird*:



In Sámi culture, the Arctic tern (known in some regions as jáhkal, skearra or kría) is an important bird, primarily symbolizing the arrival of summer, the return of the midnight sun, and the profound cyclical rhythm of Arctic life.

- Sign of Summer and Life: The arrival of the tern signifies the end of the harsh winter and the beginning of summer, representing warmth, life, and the light of the midnight sun.
- The 'Eternal' Bird: The Latin name *Sterna paradisaea* and its behavior –moving between Arctic and Antarctic in pursuit of continuous light– align with the Sámi appreciation for endurance, nature's cycles, and light.
- Symbol of Free Spirit: The Arctic tern is viewed as a creature that moves without borders, reflecting a "free spirit" or "inner compass" in Sámi belief systems that emphasize a deep connection to nature.
- Cultural Representation of Nature: The bird is part of the broader ecological landscape that informs Sámi art, stories, and their connection to the Sámi homeland of Sápmi (Wiki)

The Sámi cultural appreciation for the Arctic tern as the Eternal Bird that perpetually seeks the light is a metaphor for the advanced biophotonic knowledge possessed by the very long-lived alchemists of Atlantis, Hyperborea, Beringia, Lemuria, Saneid, Zu, Yuk, On and other areas where sledline temples were built.

This conspicuous pattern of artificial isthmus, peninsula and cape structures enclosing lagoon estuaries defines a previously unrecognized class of megastructures where underwater UFO activity is often seen.

In every case, these Atlantean sledline temples represent gargantuan, multi-tiered psychoacoustic temple complexes with vast networks of chambers, spacecraft hangars of great proportions and interconnecting tunnel systems that facilitate the subterranean passage from one complex to the next along ley line paths.

The polarized character of the symbolic expressions of Hyperborean temple designs reflects the spiritual dichotomy between the tenets and practices of the Sons of the Law of One versus the severely depraved practices of demonic possession and predation by the Baal syndicate, linked with ancient human sacrifice.

The positive polarity of the Sons of the Law of One is emphasized by the overtly comical motif selected for the layout of a geopolymer structure in the southern Kara Sea, which displays the stylized contours of an Atlantic puffin (*Fratercula arctica*, opposite) with orange landing gear deployed. A neighboring island was modified with a nose-shaped temple to give the impression of a leprechaun head in profile view (below).



Lunda levitation circuit temple and underwater UFO base at Zaliv Tyulenyi Island, in the Kara Sea, Russia (74.100959°N, 83.356190°E, above) is located 5,195 miles from the Atlant Pyramid, submerged off the Florida coast; comprising 20.87% of Earth's mean circumference ($^{167}/_{800}$). This resonant distance interval reflects the values of Fibonacci #163 ($5,193.98... \times 10^{-31}$) in miles and Fibonacci #386 ($20.880... \times 10^{-80}$) in percent, ensuring placement within a nodal vortex of planetary infrasound focused by the Orion Pyramids.

Satellite imagery reveals that the shorelines of Zaliv Tyulenyi Island have been altered to form a series of smooth arcs that enabled the high-speed transit of levitations sleds around the perimeter trackways. The 3 additions to the island were made as a stylized depiction of a puffin's beak, feet and tail (without wings).

The avian themes of Hyperborean sledline temples was meant to be appreciated from aerial perspectives of flying Atlantean vimana spacecraft. The overarching theme of flying migratory birds also alludes to the migration of antigravitic spacecraft to Earth from other planets within our galaxy, and from farther beyond.

The significance of Atlantic puffin symbolism among the temples of Hyperborea can be gleaned from the traditional folklore of the Sámi culture of the Scandinavian Arctic nations of Norway, Sweden and Finland:

In Sámi culture and the broader Northern Norwegian coastal folklore, puffins (often referred to as 'sea parrots' or sea clowns) hold symbolic, ecological, and practical significance.

- **Indicators of Abundance and Coastal Life:** In coastal Northern Norway, where many Sámi historically lived and fished, puffins are viewed as indicators of seasonal change and abundance. Their arrival in early spring marks the change of seasons, with their massive colonies often indicating rich fishing grounds.
- **Sign of Good Fortune:** In regional North Atlantic folklore, puffins are considered sacred or lucky birds, sometimes seen as possessing the spirits of deceased fishermen or sailors.



Atlantic puffin
Fratercula arctica

- **Cultural Connection to Nature:** As part of the traditional Sámi and coastal North Norwegian worldview, in which animals and elements are revered and integrated into daily life, the puffin represents the enduring, sometimes harsh nature of the Arctic coastline.
- **'In-Between' Creature:** Due to their ability to dive into the sea and live in burrows, they are often seen as creatures of the 'in-between', bridging the ocean and the land, reflecting traditional shamanic identification of certain animal species as active mediators between different realms of activity.
- **Modern Symbolism:** In contemporary North Norwegian culture (which includes Sámi), the puffin is frequently used in art and coastal festivals as a symbol of identity and a reminder of the need for ecological awareness in the Arctic, specifically concerning ongoing climactic changes [related to the present magnetic pole shift.]

While reindeer are central to inland Sámi culture, the puffin serves as a poignant emblem for coastal Sámi, connecting them to the rhythms of the sea and the cliffs of places like Vesterålen and Lofoten. (Wiki)

The humorous sea clown imagery of Zaliv Tyuleniy Island is contrasted by another atoll megastructure situated in the northeastern area of the Kara Sea. The submerged contours of this remarkable levitation sled circuit temple were strategically designed to replicate a profile view of the head of the largest predatory bird inhabiting the Russian Far North: the white-tailed eagle (*Haliaeetus albicilla*, opposite).

The sickle-like contour of this modified island atoll is reminiscent of a curved obsidian knife blade, while the general shape resembles both an owl's talon and the heavy eyelids of the leprechaun ET humanoid species. This combination of imagery has also been rendered in modified islands at several other sites.



White-tailed eagle head motif
Hyperborea - Voronina Island, Russia

Goaskin levitation sledline temple and underwater UFO base at Voronina Island, in the Kara Sea, Russia (78.1880832°N, 93.7582391°E, above) is located 4,961 miles from the Atlant Pyramid submerged off the Florida Escarpment, comprising 19.93% of Earth's mean circumference ($^{623}/_{3125}$). This resonant distance interval corresponds to the values of Fibonacci #1852 ($4,961.63... \times 10^{-384}$) in miles and Fibonacci #228 ($19.938... \times 10^{-47}$) in percent, ensuring receptivity in a nodal vortex of focused infrasound resonance.

The highly recognizable design plan of this levitation sled circuit temple has made it a target of government suppression tactics. All publicly available satellite imagery of Voronina Island is either left blank, given at low-resolution or is hard to make out due to surrounding ice flows (removed for clarity in the image above).

Contrived presentations of ice-obscured satellite imagery follows the increasingly obvious trend of feigned incompetence employed to conceal the actual geographical features of our planet from the general public. At the same time, false historical timelines are disseminated by corrupt government archeology institutions –exemplified by the *Smithsonian Institute*– to conceal the vestiges of an ancient Hyperborean civilization.



White-tailed eagle
Haliaeetus albicilla

For traditional healers in the Siberian Arctic and among the collective of human and ET humanoid groups of Hyperborea, the white-tailed eagle symbolizes *watchfulness, power and aerial dominance*. Visionary journeys made by *noaidi* inform its symbolic role as a spirit guide and protector among the Sámi peoples:

In Sámi culture, the eagle (goaskin, goadnji or spijja) embodies a dualistic significance. Historically, it is revered as a powerful spiritual protector, a shamanic guide, and a symbol of ultimate vision. However, it is also viewed practically as a formidable threat to vital reindeer herds, creating a complex relationship of both awe and conflict.

Spiritual and Shamanic Symbolism

- **Guardian of the Shaman:** The eagle holds a prominent position on traditional Sámi drums (goavdásat), often painted at the very center because its high vantage point allows the great raptor to see across all realms.
- **The Noaidi's Helper:** For the noaidi (Sámi shaman), the eagle acts as a spiritual power animal and an intermediary, helping the shaman navigate the spirit world and secure vision or protection.
- **Symbol of Focus:** In Sámi folklore and joik (traditional singing), the bird's keen eyesight represents clairvoyance, wisdom, and the ability to see things from a higher, transcendent perspective. (Wiki)

Architectural modification of Voronina Island to mimic the profile of an eagle's head represents one of the most immediately recognizable and iconic avian symbols depicted by Hyperborean temple builders, which shows many parallels to predatory bird imagery used by the leprechaun ET species to identify themselves.



Mermaid's purse motif
Hyperborea - Sverdrup Island, Russia

Sverdrup Island is another Arctic atoll in Kara Sea exhibiting conspicuously unnatural features. A small, geologically-formed island was modified with additional structures connected by a series of curving sled trackways encircling atoll's perimeter, resembling a *mermaid's purse* –called a 'vuorbmä' in Northern Sámi.

Vuorbmä levitation circuit temple and underwater UFO base at Sverdrup Island, in the Kara Sea, Russia (74.567239°N, 79.391756°E, above) is located 3,498 miles from the Great Pyramid of Giza, Egypt, comprising 14.05% of Earth's mean circumference ($\frac{7}{50}$). This resonant distance interval reflects the values of Fibonacci #856 ($3,498.92... \times 10^{-176}$) in miles and Fibonacci #1524 ($14.050... \times 10^{-318}$) in percent.



Promernaya Lagoon's design format resembles traditional paisley pattern elements, while simultaneously depicting a 'mermaid's purse'—a maritime folklore name for the egg casings of sharks, skates and rays (above). The incubation theme is also overtly emphasized by a nearby atoll designed as a shark fetus.



The repetition of zoomorphic imagery at adjacent island sites, forming clusters of unusually contoured atoll structures in the Kara Sea, stands as solid confirmation that these multi-tiered buildings were all interconnected by levitation sled trackways now covered by thousands of years of seafloor sediment deposition. Northeast of Vuorbmä sledline temple is a modified island designed as a shark embryo, with the central island depicting the embryo's yolk sack.



Shark embryo motif
Hyperborea - Slozhny Island, Russia

Akula-algú levitation sledline temple and underwater UFO base at Slozhny Island, in the Kara Sea, Russia (77.051072°N, 89.0049407°E, above) is located 3,724 miles from the Great Pyramid, comprising 14.96% of Earth's mean circumference ($^{187}/_{1250}$). This resonant distance interval corresponds to the values of Fibonacci #770 ($3,723.89... \times 10^{-158}$) in miles and Fibonacci #1438 ($14.953... \times 10^{-300}$) in percent. In addition, the site demonstrates exact placement at 77 North latitude, assuring efficient network receptivity.

This immense geopolymer sandstone megastructure was designed as a shark fetus, elaborating on the same theme depicted by the nearby mermaid's purse atoll structure. The clustering of modified islands in the Kara Sea also includes an homage to one of the loudest migratory birds that visits the Arctic region every summer. The V-shaped aerial formations made by geese during migrations in large numbers is often emulated by Hyperborean fleets of transdimensional spacecraft flying through the atmosphere.

'Hamsa' is the Sanskrit word meaning "goose". Ganders (males) are renowned for aggressive and fearless defense of their mate, nest and eggs –typically charging intruders with raised wings and an open beak.



Canada goose head motif
Hyperborea - Severny Island, Russia

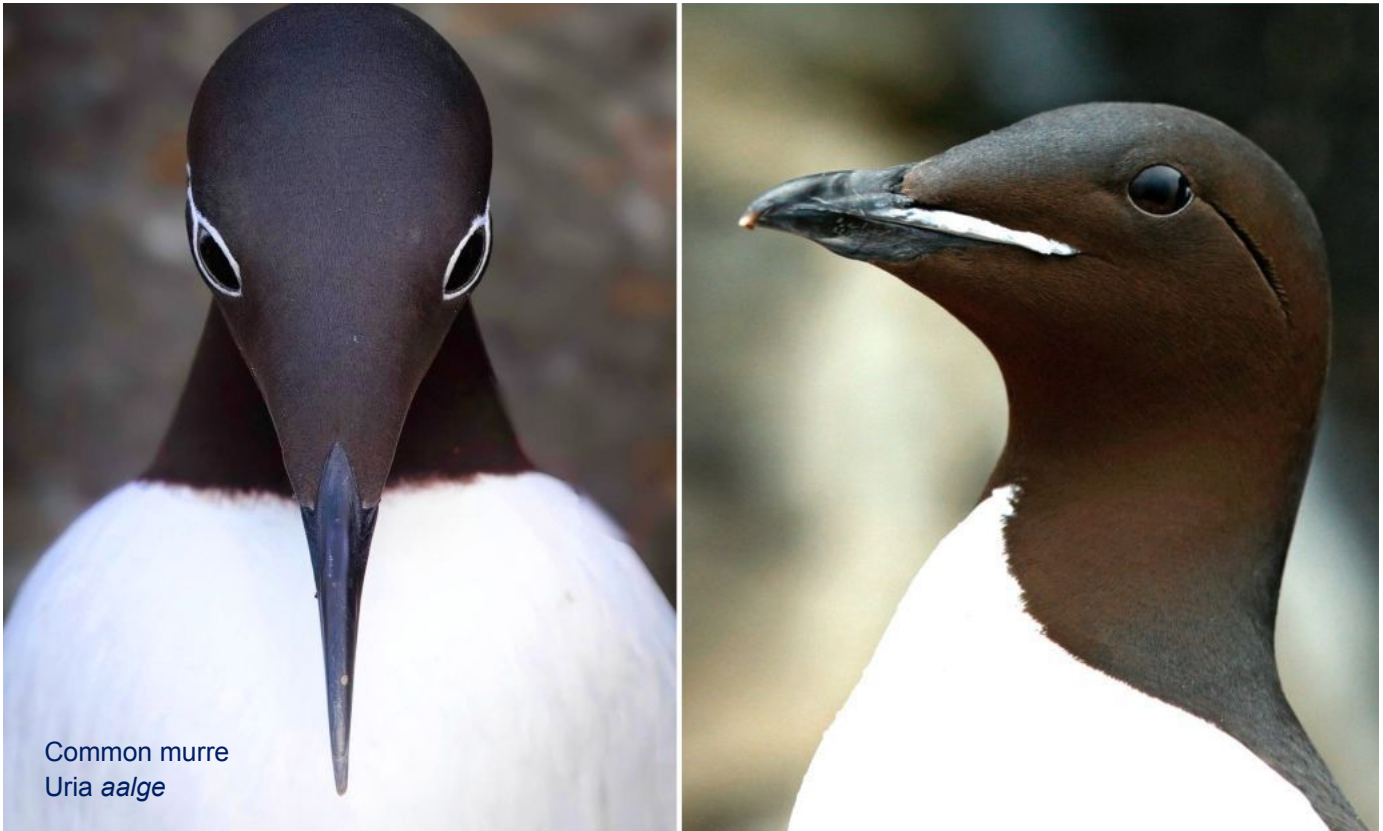
Hamsa levitation circuit temple and underwater UFO base at Severny Island, in the Kara Sea, Russia (77.28632°N, 90.69694°E, above) is located 3,755 miles from the Great Pyramid; comprising 15.085% of Earth's mean circumference ($^{15}/_{100}$). This resonant distance interval corresponds to the values of Fibonacci #1349 ($3,757.00... \times 10^{-280}$) in miles and Fibonacci #170 ($15.08... \times 10^{-34}$) in percent. This atoll temple was designed as a humorous caricature of a honking Canada goose (*Branta canadensis*, below).



Canada goose
Branta canadensis

The contours of Hamsa sledline temple show the same stepped terrace features seen encompassing so many other Arctic atoll temples in Svalbard, and reiterated at many other artificial atolls and modified island locations proceeding eastward –in the Kara, Laptev and White Sea regions of Russia’s High Arctic.

The transdimensional capacity of the various spherical, egg-shaped, discoidal and cylindrical spacecraft of the Hyperboreans was extolled in symbolic form by the designing of great architectural monuments in the form of diving birds that are able to thrive in both aerial and aquatic environments. The multi-domain capabilities of Atlantean antigravitic craft also included *passage through the domains of space and time*, and passing directly through rock into sealed caverns hidden below the surfaces of planets and moons.



The worldwide Sanskrit motherculture of Atlantis experienced a period of major expansion and colonization of various regions ~30,000 years ago, when megastructures were built at nodal vortex points in the global mandala of the Unity Field. Infrasound hotspots situated in key coastal areas were selected as prime temple building sites, with a notable preference being shown for river delta estuaries which were going to be submerged by gradual sea level rise proceeding at a predictable pace for many thousands of years.

The construction of atoll levitation circuit temples in the forms of endemic animals, and bird heads in particular, prevailed for many thousands of years during the rebound expansion period that followed the Great Flood catastrophe of 30,250 bp. Prior to this period, the designs of Atlantean sledline temples had been disguised as geological features blending in perfectly with various natural bedrock formations.

According to the Edgar Cayce readings, the construction boom in artificial stonework was intensified in regions where emissaries of Atlantean leaders secured peace treaties based on cooperative technology sharing agreements which stipulated that regional rulers were to be selected by the Atlantean leaders.

The Atlanteans’ carefully controlled dissemination of technology through these means fueled a burst of creative designs with dynamic arrangements of sledline arcs forming animal shapes that could only be seen from aerial views. These new expressions of zoomorphic architectural style included a representation of the common murre or guillemot (*Uria aalge*, above), presenting 2 distinct forms: one with white eyelids and a straight neckline, and the other with brown eyelids and a neckline that curves to a point.

This distinction is significant because the atoll-builders of ancient Hyperborea designed each temple with highly specific characteristics that belong to an endemic animal species. In the case of the murre head design, Hyperborean builders specified the type of murre as the kind with brown eyelids. The neckline type depicted in a temple in the Kara Sea encodes a hieroglyphic ligature formed by a sine wave joined to a spiral, forming the Paleo-Sanskrit votive phrase 'pra cakra'.

According to the epigraphic decipherment of Professor K. Schildmann, this simple phrase translates as "Advancing (the) era", referencing technological elevation of the Atlantean civilization in Hyperborea during the final phase of psychoacoustic society on Earth lasting from approximately 30,200–12,900 years ago.



Murre head, glyphs motifs
Hyperborea - Bolshoy Island, Russia

Langvía levitation circuit temple and underwater UFO base at Bolshoy Island, in the Kara Sea, Russia (75.327854°N, 82.008133°E, above) is 5,106 miles from the Atlant Pyramid submerged off the Florida Escarpment, comprising 20.51% of Earth's mean circumference ($\frac{641}{3125}$). This resonant distance interval corresponds to the values of Fibonacci #852 ($5,104.86... \times 10^{-175}$) in miles and Fibonacci #1075 ($20.522... \times 10^{-224}$) in percent, confirming site alignment within the global mandala of infrasound resonance.

The temple's depiction of an iconic diving bird directly references the passage of glowing spacecraft which dive down into and re-emerge from this underwater UFO base just as the murre dives in the ocean. The extremely rare inclusion of Paleo-Sanskrit glyphs in the design of Langvía or 'murre' temple provides a direct linguistic reference to the original conceptual framework indicated by the builders themselves.

The sophisticated use of biological references from avian and marine species is not unique to atoll temple designs, but are also present in hieroglyphic Sanskrit artifacts and cave paintings from various continents. especially Chavet and Lascaux Caves, France; Calabria, Italy; Burrows Cave, Illinois, US; Ica, Peru; Puma Punku, Bolivia; Leang Leang Valley, South Sulawesi. Paleo-Sanskrit passages from each of these sites and many others were extensively documented with full translations in previous work ('Sanskrit', 2014).

The ~17,000-year-old archeological site of Gobekli Tepe, Turkey is also famous for its variety of animal reliefs seen on massive T-shaped pillars that have gained significant international attention. Excavations in 2024 uncovered fine stone platters and bowls that were not carved, but rather cast in geopolymer stone.

In the Laptev Sea, a geopolymer sandstone levitation circuit temple was designed in the form of an eye –*the eye of a giant reptilian ET humanoid*. This predatory species of subterranean ET humanoid has been morphologically described in previous work by this author (*'Baal Hybrids'*, 2015), presenting both male and female complete skeletal specimens from Johnson Cave in Kanab, Utah and cranial remains carved as Tibetan necromancy masks. Kudrishti' is the Sanskrit term for 'evil-eye'



Giant reptilian ET eye motif
Hyperborea - Peschany Island, Russia

Belial levitation circuit temple and underwater UFO base at Peschany Island, in the Laptev Sea, Russia (74.319653°N, 116.090984°E, above) is located 5,219.5 miles from the submerged Atlant Pyramid off the Florida Escarpment; comprising 20.97% of Earth's mean circumference ($2^1/_{100}$). This resonant distance interval reflects the values of Fibonacci #230 ($5,220.02... \times 10^{-45}$) in miles and Fibonacci #898 ($20.961... \times 10^{-187}$) in percent, securing efficient reception of infrasound resonance focused by the Orion Pyramids.

This spectacular submerged levitation circuit megastructure extends ~8 miles in maximum diameter along the north-south axis, and ~5 miles in minimum diameter along the east-west axis. The outer perimeter of the annulus is formed by a series of 3 stepped terraces, with each level terrace being wide enough to accommodate 2 sets of trackways for traffic moving clockwise or counterclockwise around the circuit.

The malevolent gaze of the giant reptilian eye could not be conveyed more clearly than has been rendered in synthetic sandstone at Peschany Island. In fact, the Peschany Island megastructure fits all the criteria for being classified as an atoll formation, yet this term is simply not used in the Arctic context. Why not?

The USSR and present-day Russian governments have preferred to classify this sandstone atoll as an island to obscure its architectural connection to other artificial atoll structures in the Arctic, the Maldiv Islands and South Pacific islands of Polynesia. In each region, atolls are actually man-made structures.

Satellite surveillance by various nations has captured UFO activity in the vicinity of Peschany Island; the covert site of an underwater UFO base occupied by various ET humanoid species of the Baal consortium. As referenced obliquely in the Bible, the Baal represents a syndicate of predatory ET humanoid species that have demanded blood and human sacrifices from their human subjects for tens of thousands of years.

According to multiple high-level sources, the giant reptilian ETs have been using time-travel in a totally amoral manner, jumping back and forth in time to make alterations to the flow of events for their benefit. Despite all their subterfuge, informed sources indicate that all the reptilian ETs efforts for dominion will fail.



As the battle of good versus evil intensifies with the atmospheric, psychoacoustic and bioelectric changes now unfolding on planet Earth, the great masses of humanity are now rapidly gaining awareness of the ET crypto-species living below the surface of our planet. The giant reptilian ETs use quantum technologies for the serial abduction, rape, torture and murder, involving extraction and consumption of adrenochrome and GDF-11 from the blood of victims, as extensively detailed in previous works by this author.

The heavily veiled reality of the nefarious ET forces behind the prevalence of ancient human sacrifice, modern ET abduction, and human and animal mutilations relates to the vampiric metabolism of these exclusively *kleptoparasitic* reptilian ETs. Absorption of blood products is achieved through the pores of their skin, armored with scales, which literally involves the use of an electrified bloodbath or vapor bath.

The direct link between the giant reptilian ETs and the submerged atoll complexes is conveyed in artistic form by the artisans of Yuk, excavated in Puerto Rico and incorrectly attributed to the Taino culture (above, left). The Taino people inherited troves of Paleo-Sanskrit artifacts produced thousands of years earlier by the prior civilization of Yuk, centered on the Yuk Pyramid Complex in the Gulf of Guanahacabibes, Cuba.

Technical processes required for manufacturing black magnetite geopolymers of this specialized variety use freezing temperatures to negate the heat generated by exothermic chemical reactions, confirming that these objects were not made in the heat of the Caribbean sun, but were produced in underground facilities.

Many symbolic representations rendered in the forms of architectural megastructures in the sunken lands of Hyperborea are difficult to interpret due to the lack of direct references to the physical appearance of the various ET humanoid species that collaborated in the megalithic construction of sledline temples.

In the Dunay Islands of Russia's Laptev Sea, an impressive geopolymer circuit temple was designed as the eyes of a leprechaun ET humanoid, emphasizing their thick, heavy eyelids –while giving the alternate impression of a pair of owl talons as observed in similar form at many other temple sites of leprechauns.



Leprechaun eyelids, talons motifs
Hyperborea - Dunay Islands, Russia

Luopma levitation circuit temple and underwater UFO base in the Dunay Islands of Russia's Laptev Sea, (73.981869°N, 123.270979°E, above) is located 4,283 miles from the Great Pyramid of Giza, Egypt; comprising 17.21% of Earth's mean circumference ($\frac{43}{250}$). This resonant distance interval reflects the values of Fibonacci #799 ($4,281.92... \times 10^{-164}$) in miles and Fibonacci #1467 ($17.194... \times 10^{-306}$) in percent. The site also presents exact placement 74 North latitude for enhanced reception of infrasound resonance.

'Luopma' is a Sámi word for "lids" or "eyelids". In its use of owl talon symbolism, Luopma sled circuit temple reiterates the designs of other temples forming artificial islands, including the Frisian Islands in Germany's Wadden Sea; islands in Lake Tengiz, Kazakhstan; and in Lake Kulundinskoye, Russia.

The concealed presence of small, luminous aerial vehicles belonging to the leprechauns and gnomes of Hyperborea is linked with maritime reports of anomalous aerial and marine objects in the Laptev Sea. In 1978, dozens of eyewitnesses confirmed the mass sighting of a luminous craft that caused engine failure:

In the Laptev Sea off Krasnoyarsk Krai in Russia. The captain and crew of a Soviet destroyer saw a bright yellow, sparkly, semi-transparent object at 30 m altitude, at which the ship's navigation equipment failed. After a time the thing descended to the ocean surface and moved off at great speed. After it had gone, the ship's equipment resumed normal working. (Mitrovic G., 2021)

The facial features of leprechaun ET humanoids have not been adequately characterized by any previous investigations. The world's first and only publicly available photographic documentation of the leprechaun ET humanoid species was obtained by game hunters in Ohangwena, Namibia in 2011 (below, right).



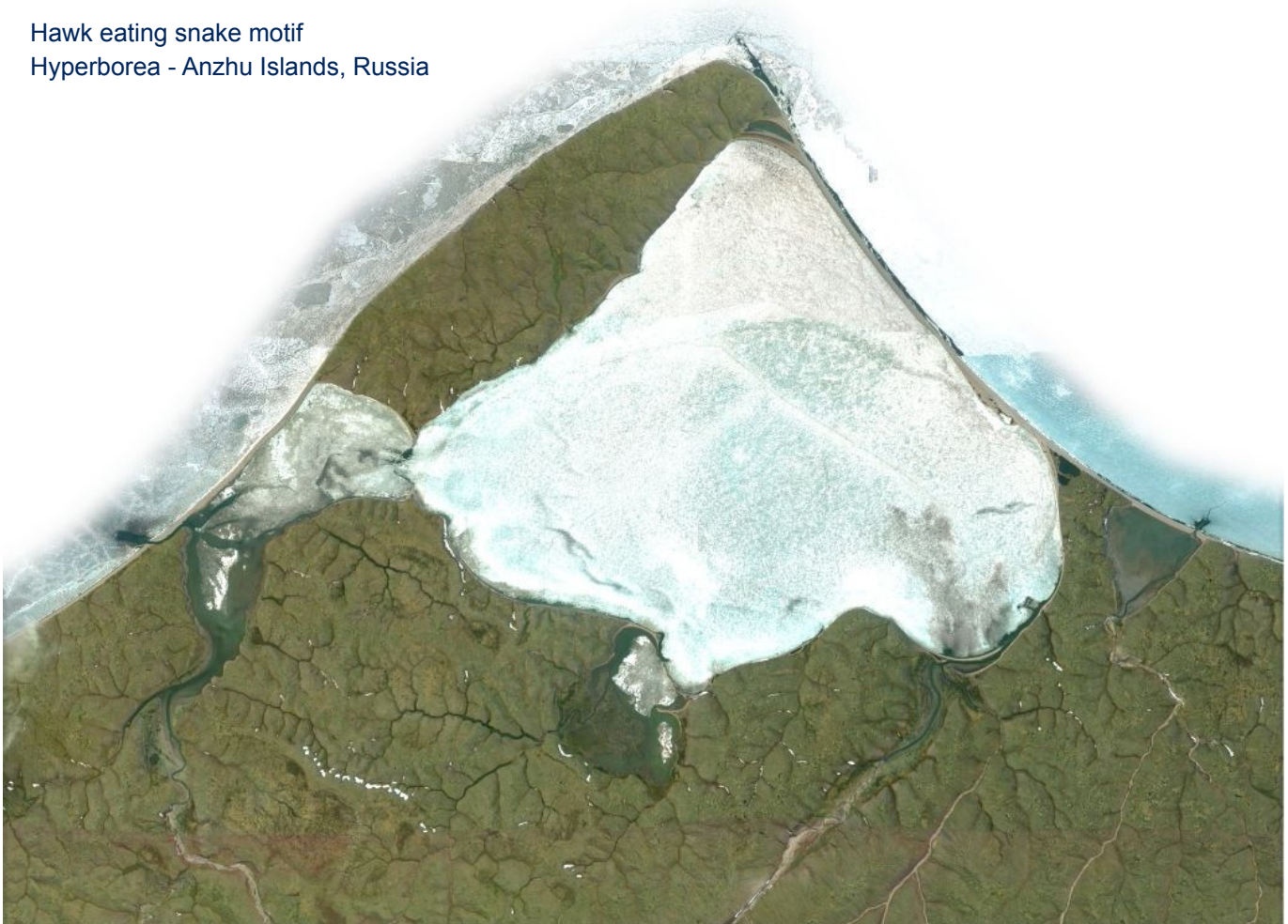
Polychrome ceramics and goldworks excavated from Puma Punku and Tiwanaku, Bolivia display the very same features of the quadrupedal Leprechaun ET species identified in prior works (*'Baal Hybrids'*, 2015).



The global coverup operation that has been foisted on the world by the CIA, with all other government agencies falling in line, has methodically removed all photographs and videos of leprechauns and other ET humanoid species from public circulation, leaving the work of this author as *the only online resource for accurate photographic and illustrative material concerning non-human morphological characteristics.*

The extreme criminality of the global censorship regime cannot be overstated. The CIA maintains control of individuals by targeted theft, harassment, death threats and contract murders designed to silence and dispose of anyone who dares to speak the truth. The long list of US government employees murdered by CIA hitmen *for refusing criminal operations* must be fully exposed by future efforts toward UFO disclosure.

Hawk eating snake motif
Hyperborea - Anzhu Islands, Russia



The present exposition of the Atlantean levitation sledline temples of Hyperborea aligns closely with the design of purposefully submerged temple sites found in many other regions of the world. The strong continuity of architectural expressions is being revealed here, for the first time, presenting the accurate temporal context, site locations and resonant alignments, in addition to design motifs, hi-tech functions and accurate cultural interpretations based on the consensus of multiple high-level information sources.

The Anzhu Islands of Russia's High Arctic also conceal a surprising abundance of evidence confirming the ancient inhabitation of the archipelago by the mixed society of Atlantean Hyperborea. Geopolymer temple contours were designed to give an impression of a hawk eating a snake, as referenced in Sanskrit and Buddhist cosmology as a visual metaphor for preclusion of immoral acts and resulting karmic retribution.

Syena levitation sledline temple and underwater UFO base in the western Anzhu Islands of Russia (75.59160°N, 137.023566°E, above) is located 4,489 miles from the Great Pyramid, which constitutes 18.03% of Earth's mean circumference ($\frac{9}{50}$). This resonant distance interval reflects the respective values of Fibonacci #512 (4,489.38... x 10⁻¹⁰⁴) in miles and Fibonacci #1180 (18.027... x 10⁻²⁴⁶) in percent.

Nude female torso, breast motif
Hyperborea - Zarya Straight, Russia

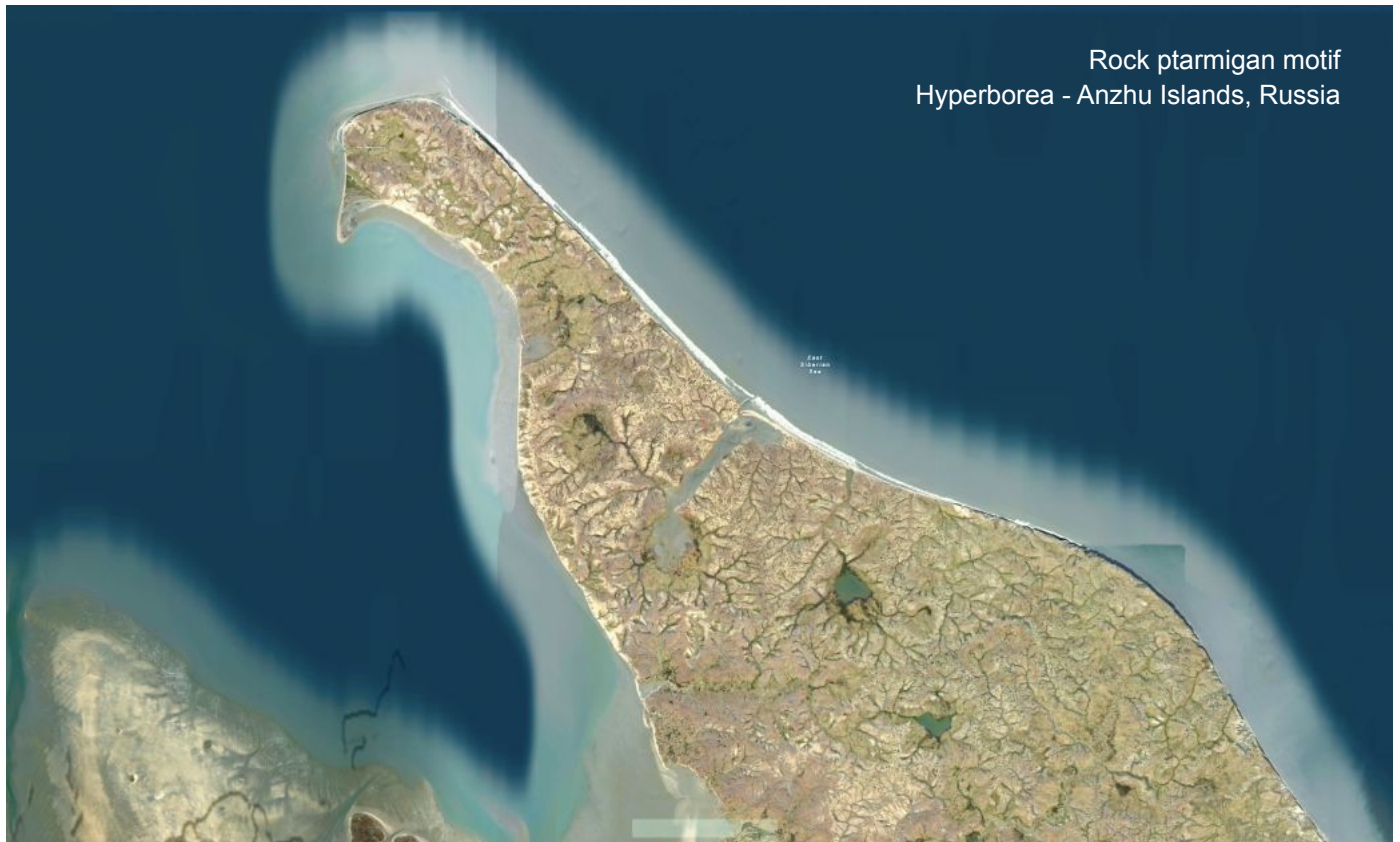


Another maternity symbol was cleverly expressed in the sensual design of a levitation sledline temple in the western Anzhu Islands. This High Arctic coastline was shaped to resemble a profile view of the torso of a woman, with the temple itself forming the lower breast and nipple-shaped point (above). The figural contours of Zarya Straight were modified by Hyperborean engineers for use by high-speed transit lines.



Wavecrest motif
Hyperborea - Anzhu Islands, Russia

Another iconic bird temple was designed to imitate the body posture of a rock ptarmigan (*Lagopus muta hyperborea*, below) in the particular posture the snow bird takes when making its loud territorial call; leaning forward with it's neck extended high. The body of the bird is formed by a natural peninsula that was modified for coastal levitation sledline transit systems converging on the temple formed as a beak.



Rock ptarmigan motif
Hyperborea - Anzhu Islands, Russia

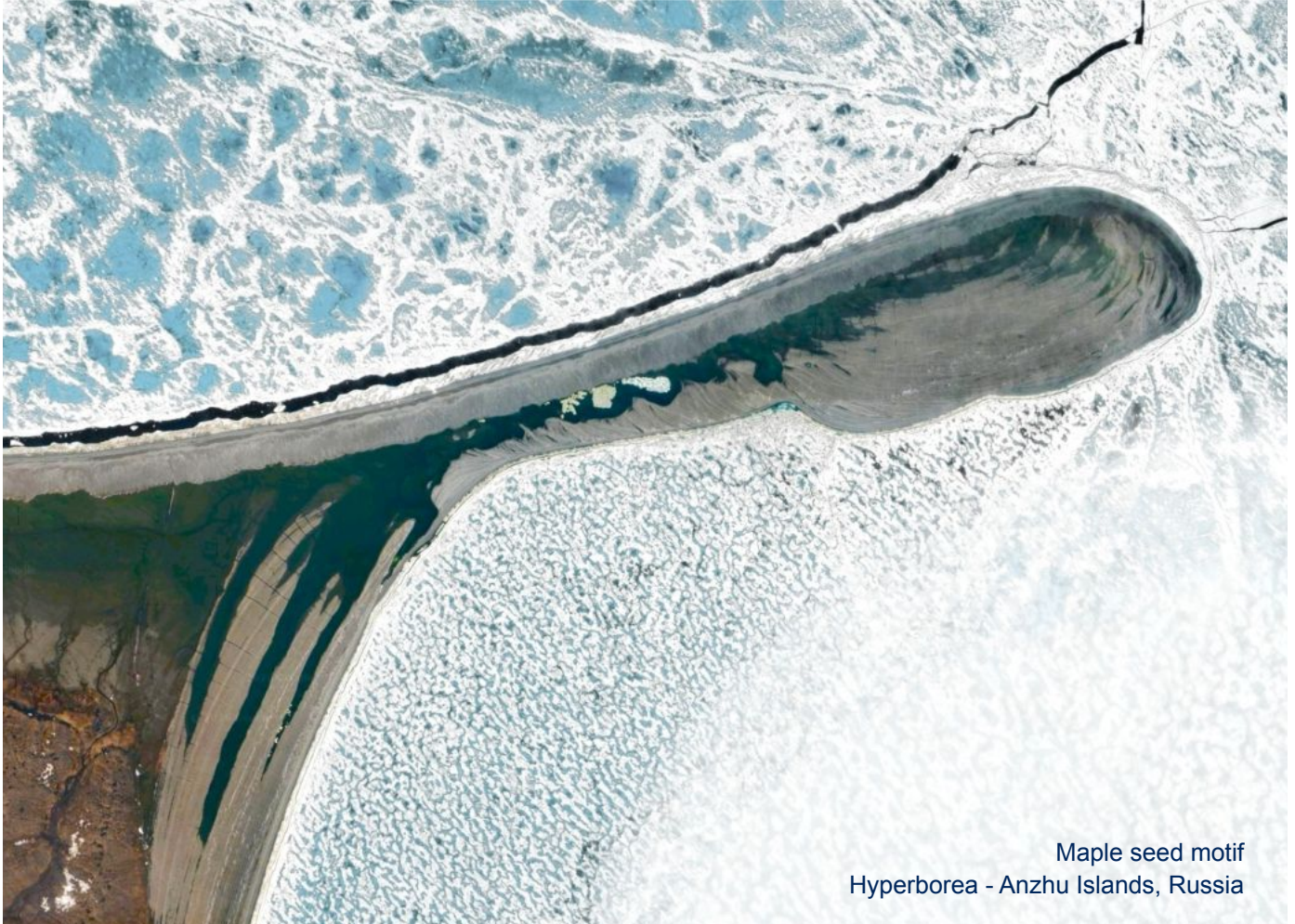
Karrieko levitation circuit temple and underwater UFO base in the north Anzhu Islands of the East Siberian Sea, Russia (76.15970°N, 141.370965°E, above) is located 4,539 miles from the Great Pyramid of Giza, Egypt; comprising 18.24% of Earth's mean circumference ($^{114}/_{625}$). This resonant distance reflects the values of Fibonacci #201 ($4,539.73... \times 10^{-39}$) in miles and Fibonacci #869 ($18.229... \times 10^{-181}$) in percent.



Rock ptarmigan
Lagopus muta hyperborea

While the vast majority of temple sites were designed as sacred faunal representations, floral symbols are also evident. A site of interest in the Anzhu Islands represents yet another enormous geopolymer dolomite limestone peninsula representing the upper portion of a hidden UFO base that was submerged long ago.

Aerial imagery reveals the general layout of the temple was made to resemble the wings of maple seeds (genus *Acer*), which are blown far from the tree by virtue of their helicopter-like rotation. The patterning of sled trackways on the peninsula emulates the rigid vein structures of the maple seed's wings (below).



Siöm levitation circuit temple and underwater UFO base at Mys Anisiy Peninsula, in the Anzhu Islands, Russia (76.200852°N, 139.116365°E, above) is located 4,504 miles from the Great Pyramid, comprising 18.09% of Earth's mean circumference ($^{113}/_{625}$). This resonant distance reflects the values of Fibonacci #1024 ($4,506.69... \times 10^{-211}$) in miles and Fibonacci #1692 ($18.096... \times 10^{-353}$) in percent.

The use of maple seed and rock ptarmigan iconography in sledline temple megastructures of Russia's Anzhu Islands implicates significant moderation of the Arctic climate during the Atlantean Era through the technological application of focused infrasound standing wave resonance from the pyramid network.

The Paleo-Sanskrit votive placename 'Anzhu' is composed of a triad of glyphs, reading: **an z hu**, meaning "(The) Breath from within, (of the) receptive". This sacred name refers to the alchemist's inner receptivity to psychic intuition from the Akashic Source, which is enhanced by exposure to ULF wave resonance.

All available satellite imagery of this location are either icebound or partly covered by low clouds, limiting the visibility of the underwater features of levitation sledline trackways running just below the present-day sea level. The public release of high-resolution bathymetric and topographic data for sledline temple sites such as these would reveal the full extent of architectural features that were embedded in the seascapes.

The Sámi word for “seed” is ‘siõm’, used in this context in the naming of this maple seed-shaped levitation sledline temple. The symbolic significance of maple seeds among ancient Siberian cultures is not known, yet is recognized by many ancient cultural traditions around the world. Maple leaves are considered as symbols of love and loyalty, while the seeds are associated with prosperity, resilience and transformation:

Maple seeds –often called ‘helicopters’ or ‘whirlybirds’– symbolize freedom, new beginnings, and letting go. Because the winged seeds spin gracefully in the wind to plant themselves far from their origin, they represent the courage to leave a familiar place and the hope of flourishing in a new, fertile environment.

Universal & Cultural Symbolism

- **Courage & Hope:** Often referred to as "helicopter seeds," their spiraling descent is a metaphor for letting go of the past and trusting the winds of change to carry you toward new growth.
- **Balance & Duality:** The distinct two-winged design (the seed in the center and the wing on either side) represents harmony, balance, and the duality of life.
- **Prosperity & Fertility:** In several Eastern and Western traditions, maple seeds are recognized as tokens of luck, abundance, and the continuous cycles of nature.



Maple samaras, seeds
Acer (genus)

Traditional & Folklore Associations

- **Protection:** In Celtic and English folklore, maple trees were believed to possess the power to repel negative energy and malevolent spirits.
- **Wisdom & Patience:** In Japan, maples symbolize longevity, wisdom, and serenity. The seeds, scattered generously by autumn winds, are viewed as abundant blessings for the upcoming year.
- **Nature's Engineer:** Their unique aerodynamic design has fascinated botanists and engineers alike, often acting as a reminder of nature's inherent intelligence and adaptability. (Wiki)

The association of maple seeds with the flight of rotor-blade helicopters is quite clear, while the Atlantean builders of Hyperborea also recognized the vortical rotation of maple seeds as a visual metaphor for the interaction of counter-rotating EM fields employed by antigravitic spacecraft. The spacecraft are stored in hangars occupying a large portion of available floorspace within the sunken sledline temple complexes.



Trackways, paving seams
Hyperborea - Anzhu Islands, Russia



At high tide seawater runs into the lagoon, washing away sand to reveal trackway patterns and perpendicular arrangements of megalithic dolomite limestone slabs that form the thickly-layered ceiling blocks of this multi-tiered, submerged building complex (above). This site provides a rare opportunity to examine the casting patterns of artificial stonework over a large area, which would require excavations elsewhere.

The overwhelming consistency of levitation trackway features and megalithic casting patterns observed in Hyperborean complexes throughout the Arctic confirms the same construction technologies were used.

One of the most spectacular examples of the levitation sledline temples of Hyperborea is a submerged complex at the south-westernmost point of Wrangel Island, in Russia's East Siberian Sea. An extremely long isthmus-like structure runs for dozens of miles on either side of the point, which depicts the head and elongated tail plumage of the long-tailed jaeger, or long-tailed skua (*Stercorarius longicaudus*, overleaf).

Measuring from the tip of the beak-shaped point to the far side of the interior lagoon, the head of the jaeger temple extends for a mile in total width. From the point of the jaeger's beak, levitation sledlines run along the coast in smooth arcs, enclosing extremely lengthy lagoons for more than 12 miles in each direction.



Long-tailed jaeger head, tail motifs
Hyperborea - Wrangel Island, Russia



Long-tailed jaeger
Stercorarius longicaudus





Trackways, paving seams
Hyperborea - Wrangel Island, Russia

Long-tailed jaegers are the smallest of the *Stercorarius* genus. The long tails of breeding adults represent the 'ra' glyph, meaning "granting". The central tail feathers grow much longer during the breeding season, inspiring its association as a fertility symbol among the ancient Sámi peoples of Hyperborea, which once extended far to the east, across the northern coastlines of ancient Vedrus, known today as Russia.

Once again, megalithic dolomite blocks can be readily discerned in satellite imagery of the submerged site, forming the conspicuous outline of the head of a jaeger seabird, known in the Northern Sámi language as the '*suolaskáiti*'. The ancient origin of this name reveals a deeper connection to Atlantean alchemy.



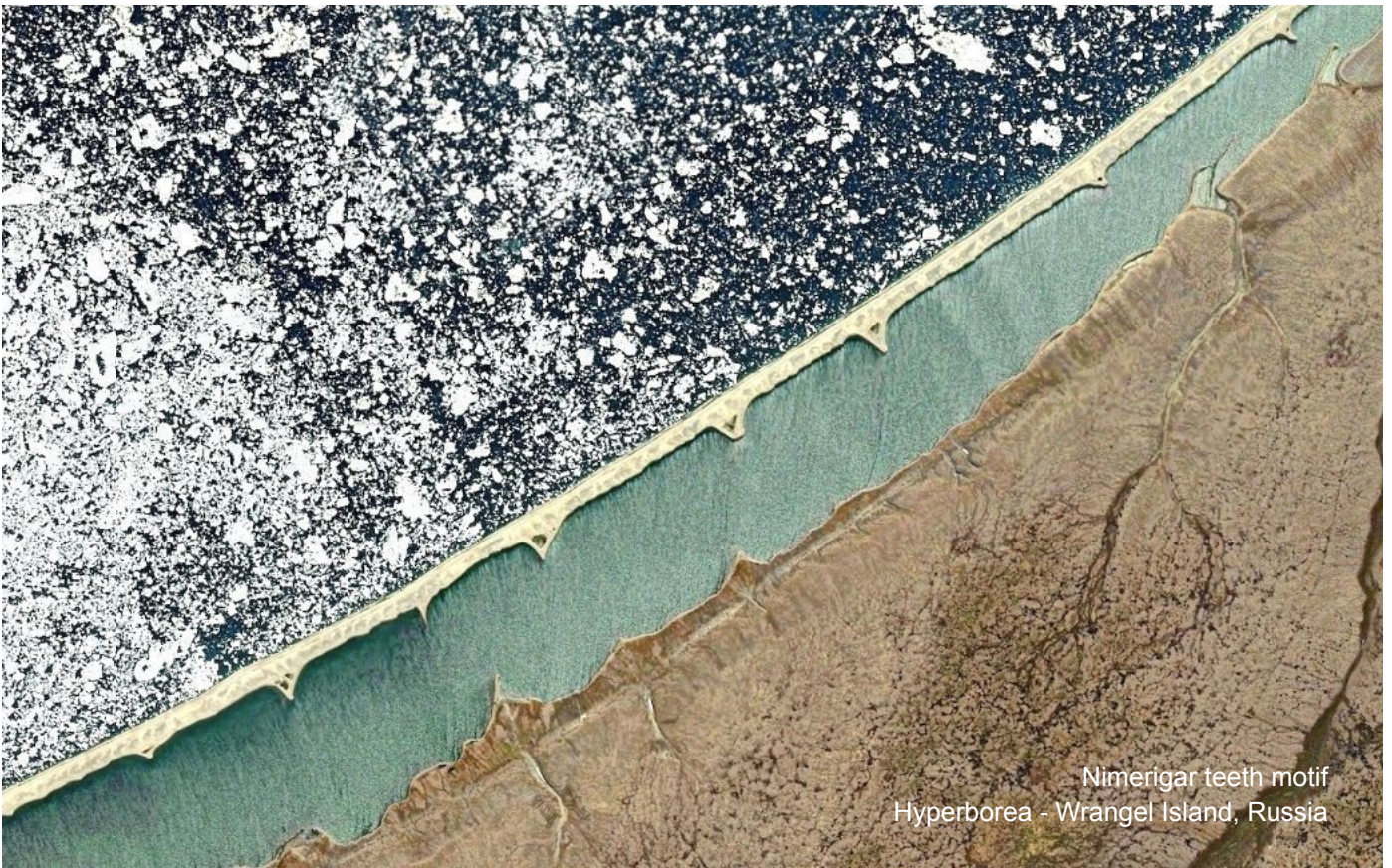
Suolaskáiti levitation circuit temple and underwater UFO base, at the southwestern extension of Wrangel Island, in the Chukchi Sea, Russia (70.78579°N, 178.79599°E, above) is located 4,608 miles from the sunken Atlant Pyramid off Jacksonville, Florida, comprising 18.51% of Earth's mean circumference (³⁷/₂₀₀). This resonant distance interval reflects the values of Fibonacci #402 (4,608.35... x 10⁻⁸¹) in miles and Fibonacci #1070 (18.505... x 10⁻²²²) in percent, confirming nonlinear alignment with the Orion Pyramids.

This geopolymer limestone megastructure was built on a grand scale corresponding to accommodations for 10-12'-tall Nefalim ET giants and 7-9'-tall hybrids, in addition to humans, hobbits and ET gnomes. The Sámi name for the jaeger is 'suolaskáiti', which is composed of 6 Paleo-Sanskrit hieroglyphs reading: **su ol as ka i ti**, meaning "(The) good burning, for following This; (the) rays." This votive name alludes to the internal burning sensation resulting from consumption of Siddha alchemical elixirs emitting γ -radiation.

Suolaskáiti sledline temple is an exceptional example of Hyperborean architectural engineering, not only for its grand proportions but also for the amazing state of conservation it displays –with sandy deposits having been largely removed by wave action. High-resolution satellite imagery reveals the configuration of absolutely immense megalithic ceiling blocks cast with the long, slightly diverging paths of sled trackways forming a great isthmus extension seen rising just above the surface of the East Siberian Sea (opposite).



Suolaskáiti sledline temple
Hyperborea - Wrangel Island, Russia



Nimerigar teeth motif
Hyperborea - Wrangel Island, Russia

The spectacular, 12-mile-long lagoon that extends along the southwest Wrangel Island coastline shows a series of thorns or barb-like features extending into the lagoon on both sides (from inland and the isthmus, below). This series of regularly spaced triangular points give the visual impression of small, pointed teeth matching the dentition of the Nimerigar gnome ET humanoid species. Similar features were constructed along the smoothly curving routes of levitation sledline trackways on Wrangel Island’s northeast coastline.



Nimerigar teeth motif
Hyperborea - Wrangel Island, Russia

A careful study of the structure of Sámi and Icelandic words for different types of birds reveals a deeper layer of significance, being composed as Paleo-Sanskrit votive phrases that can be readily broken down into hieroglyphs. The coherence of spiritual concepts given in various animal names cannot be taken as mere coincidence, but rather a confirmation of their original composition as Paleo-Sanskrit votive phrases:

Floral/ Faunal Icon	Temple Site	Hieroglyphs	Translation
common murre	Langvía	la n g vi a	“(The) beholding (of the) essence sparking through, ah”
Arctic tern	Kríá	k ri a	“(The) Virgin song, ah”
male ptarmigan	Karri	kar ri	“Works (of the) song”
male ptarmigan	Karrieko	kar ri Ek o	“Works (of the) song (of the) One, oh”
white-tailed eagle	Goaskin	g o as ki n	“(The) spark, oh; for energy (of the) essence”
hawk-eagle	Syena	s y en a	“From within, (the) imperishable That, ah”
(maple) seed	Siõm	si om	“Your Om”
giant reptilian eye	Belial	be l i al	“(The) activity (of the) essence (of) This, (of the) ability”
leprechaun eyelids	Luopma	lu o p ma	“(The) allure, oh, (of the) inner joy (of the) status”
shark egg casing	Akula-algú	a ku la al g u	“Ah, whereby beholding; (the) ability (of the) spark, oh”
ray egg casings	Vuorbma	vu or b ma	“(The) volition (of the) Artist to sound (the) status”
long-tailed jaeger	Suolaskáiti	su ol as ka i ti	“(The) good burning, for following This; (the) rays.”
great crested grebe	Dopingar	do p i n g a r	“Oscillation (of the) inner joy (of) This; (the) essential spark, ah, turning”

Votive phrases embedded within Hyperborean animal names pertain to highly specialized knowledge of Siddha alchemical practices for which the pyramids and megalithic temples of the world were originally designed. The ‘essence’ refers to radium sulfide (RaS) nanoparticles emitting α -particle ‘sparks’ and all-pervading γ -photon radiation for conferring psychic abilities –including ‘*beholding*’ (ie. remote viewing).

Not all Northern Sámi or Icelandic words can be broken down in this way to form complete votive phrases, indicating that the names of sacred animal species have been preserved from much older Paleo-Sanskrit terms of Hyperborea and Atlantis. This unifying global aspect of ancient languages informs the deeper significance of explanatory statements made by the Cassiopaeen 6th-density thought-forms during a dialog on the subject with psychic medium Laura Knight-Jadczyk on June 21, 1997:



- Q: I am tracking the clues through the various languages and alphabets... [W]hich of these alphabets, Runic, Greek, or Etruscan, preceded the others, and from which the others are derived? A: Etruscan.
- Q: Well, who were the Etruscans? A: Templar carriers.
- Q: What does that mean? A: Seek and ye shall find...
- Q: Okay. What are Templar carriers? A: Penitent Avian Lords.
- Q: What does that mean? A: For your search. All is drawn from some more ancient form.
- Q: Okay... I was digging into the Sanskrit alphabet and found that it says that it was essentially 'invented' by the great Hindu grammarian, Panini, which means that it may simply be arbitrary. And, for some reason, digging into it further does not seem to interest me... A: Because you have not yet connected these dots.
- Q: Oh, so it will be part of the picture eventually. Well, okay. We will deal with it when it comes up. Next: I notice that Sargon the Great is sort of an unknown person in historical terms. He is the first great 'Akkadian' king of Sumeria, but no one knows exactly where the term 'Akkadian' came from nor where 'Akkad' even was. Who was this Sargon? A: Deep level punctuator.
- Q: What?!? What does that mean? A: What does it imply?
- Q: Well, punctuation is a way of dealing with language, grammar... A: Beginning or end.
- Q: You guys are making me completely crazy! I will never figure all of this out! A: All is within your grasp.
- Q: Well, I think that a *huge* key is in the tracking of the languages... A: The roots of all languages are identical...
- Q: What do you mean? A: Your origin...
- Q: You mean Orion? A: Interesting the word root similarity, yes?
- Q: Well, the word root similarities of a lot of things are *very* interesting! It is *amazing* the things I have discovered by tracking word roots... A: The architects of your languages left clues aplenty. And, you have the rare opportunity to learn far more of this by being taught to speak and understand other languages. We suggest you work to penetrate the STS [ie. Service-To-Self] implanted resistance in this area.



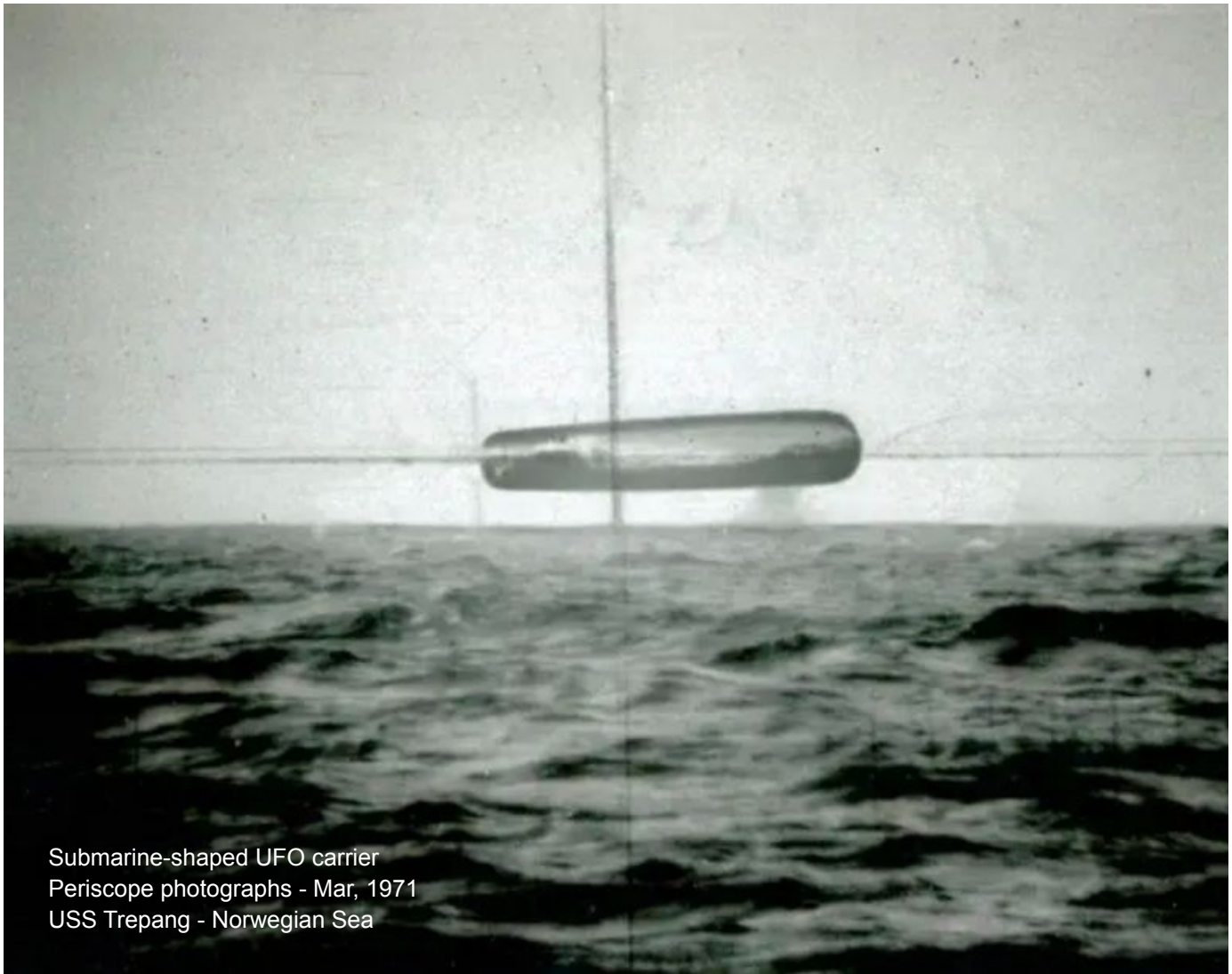
This insightful commentary shared from the Akashic Source through the Cassiopaea channel confirms the unified root of all present-day languages, as evinced by the collective Hyperborean origin of various Sámi and Icelandic languages. The Cassiopaeans related that, as Laura had first suggested, “the roots of all languages are identical”, and going even further –that “the architects of your languages left clues aplenty”.

Among the many linguistic clues left by ancient language architects are the votive names of sacred animal species that were often employed as design elements in the construction of Hyperborean temples in the Arctic seas. Zoomorphic and anthropomorphic design motifs selected by Hyperborean architects show an undeniable connection with the strategic naming of sacred animals by the ‘architects’ of languages.

The Cs use of the term ‘architects’ in the context of constructing languages hints at crucial connections between linguistic structures and the iconic avian shapes of submerged Hyperborean complexes. This juxtaposition was also reiterated by the Cs in identifying the Templar carriers as “Penitent Avian Lords”.

Their interesting choice of keywords indirectly alludes to the avian themes of Atlantean levitation sledline temples, strategically built as lagoon enclosures where rising sea levels would submerge each of the sites. These sunken temple complexes contain many hangars housing multitudes of spacecraft that form great fleets, traversing the skies in V-shaped formations (above) imitating those of migratory birds in the Arctic.

The Cs replies to Laura’s line of questioning regarding King Sargon the Great also prove relevant to the present subject of Atlantean temple construction, alchemy practices and sea level changes. Their odd use of the grammatical term ‘punctuator’ also particularly applies to the archeological discoveries of this author –offered at the present time of cyclical completion and the transition of planet Earth to a 4th-density world.



Submarine-shaped UFO carrier
Periscope photographs - Mar, 1971
USS Trepang - Norwegian Sea

Accurate identification of the loci of underwater UFO complexes reveals the maintenance infrastructure for various trans-density spacecraft encountered in the Norwegian Sea, as revealed in US Navy photographs captured far off the northern coast of Jan Mayen Island, dominated by the caldera of Beerenberg Volcano.

Among the most spectacular UFO photographs ever published is a series of periscope snapshots taken from the USS Trepang submarine that were later leaked by anonymous US Navy sources. The lengthy sequence of black-and-white images captured a UFO fleet encounter near the sea surface that occurred in March, 1971. The exact location of the processional series of USO encounters was not identified, but was alleged to have occurred at a nautical position somewhere between Iceland and Jan Mayen island.

Jan Mayen Island is a territory of Norway, and is only inhabited on a permanent basis by the Norwegian Meteorological Institute and the Norwegian military. Admiral Dean Reynolds Sackett was in command of the USS Trepang (SSN 674) when the UFO incident occurred. Officer John Klika initially spotted the object through the periscope after sonar operators reported USOs while conducting a joint military and scientific expedition. Admiral Sackett and Officer Klika have denied involvement in the UFO incident to protect their careers and families from potential retribution for violating standard military non-disclosure agreements.

Former British police officer Tony Dodd gave lectures on the subject of NATO military encounters near in the Norwegian Sea near Jan Mayen Island, providing a broader context for the spectacular 1971 periscope photographs that have stunned viewers worldwide. Dodd confided that several battle ships and attack submarines from the British, American and Norwegian Navies had tracked a giant USO by radar and sonar in the Norwegian Sea. After closing in on the spacecraft, Navy ships were attacked with plasma beams.



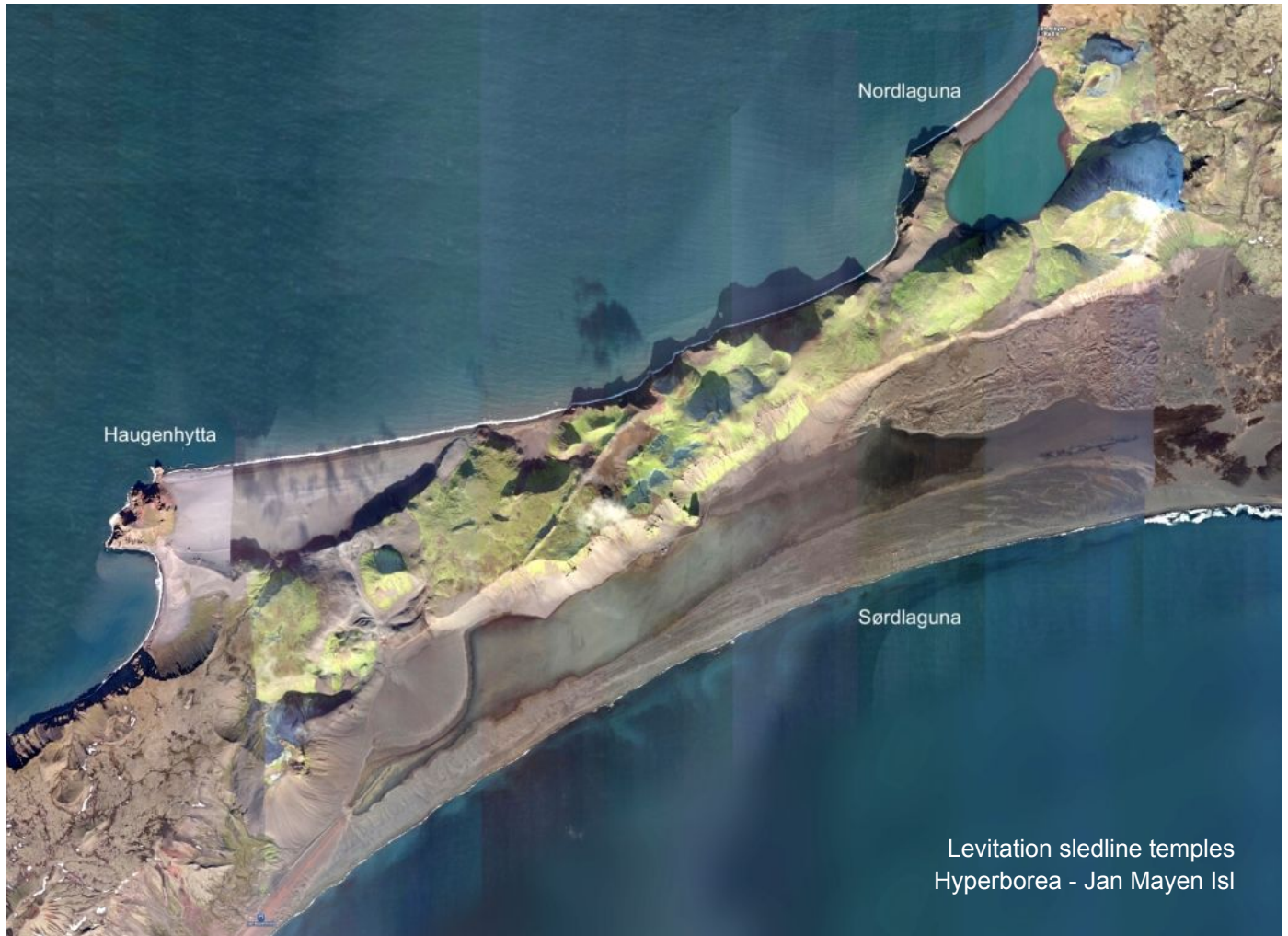
Cigar-shaped spacecraft
USS Trepang - Norwegian Sea



The most dramatic image from the 1971 USS Trepang photographic series captured a huge, cigar-shaped spacecraft raising a dense vapor cloud. A row of port-holes running along the object's side can be seen partly emitting an ember-like orange light near the midsection of the hovering object (above). Another image of the sunlit ocean surface captures a discoidal craft floating perpendicular to the horizon (below).

Years of investigation of the USS Trepang periscope photographs and related UFO incidents reported in the North Atlantic Ocean and Norwegian Sea have revealed the presence of a system of underground and underwater complexes that were built into the landscape to serve as covert bases for UFO operations.





Levitation sledline temples
Hyperborea - Jan Mayen Isl

Orithyia levitation sledline temple and underwater UFO base at Nordlaguna, on Jan Mayen Island (71.0082117°N, 8.4724805°W, above, opposite) is located 3,208 miles from the Great Pyramid of Egypt; comprising 15.17% of Earth's mean circumference ($^{103}/_{800}$). This resonant distance reflects the values of Fibonacci #162 ($3,210.05... \times 10^{-30}$) in miles and Fibonacci #385 ($12.90... \times 10^{-79}$) in percent, while also showing exact placement at 71 North latitude. These specialized radial alignments confer enhanced reception of planetary infrasound resonance focused by the global Atlantean pyramid network.

A 2nd much longer levitation sledline temple forms the south coastal lagoon at nearby Sørlaguna, while the partly submerged structure of a 3rd levitation sledline temple can also be seen to the west, at Haugenhytta. These cleverly concealed Hyperborean temple complexes do not display any recognizable zoomorphic or anthropomorphic symbolism in their design, but were instead detected by various military programs using infrared video monitoring of optically invisible spacecraft transiting to and from the covert network of bases.

All of these structures are connected by underground tunnel systems housing levitation sled trackways which are still functional to this day. The same cannot be said for the now submerged remains of levitation sled trackways that once ran above ground level, connecting the 3 artificial lagoons with a much larger UFO base that was constructed several miles south of the present-day coastline of Jan Mayen Island.

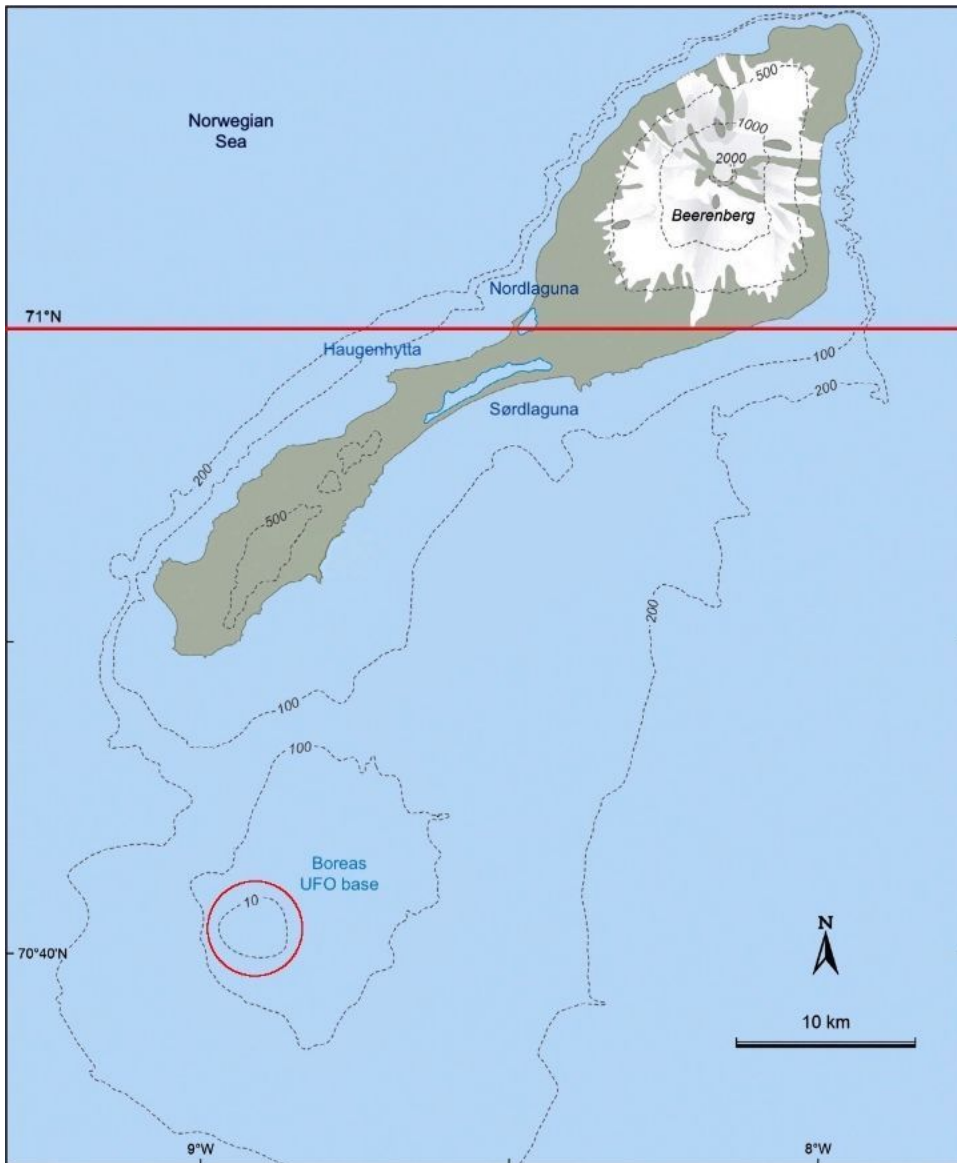
Orithyia is the human wife of the giant King Boreas. The Hyperboreans' purposeful site selection, design and construction of great temples in areas predicted to be submerged by rising sea levels fulfills technical requirements for Atlantean temples, *which cannot function properly without the presence of absorbed water molecules*. Fine seams in the casting work left between each of the megalithic stone blocks allows for adequate water absorption throughout the stonework, whereby metal hydrides act as unconventional superconductors under the influence of incident ULF pressure waves transduced by the pyramid network.



Levitation sledline temple
Hyperborea - Nordlaguna, Jan Mayen Isl



During their primary period of use prior to 18,000 years ago, when sea levels were >100 m lower than we see today, levitation sled trackways enabled rapid transit between the 3 artificial lagoon temples and a 4th complex to the south. The latter site was purposefully built at a lower elevation to be covered by the sea.



US military activity on Jan Mayen Island has steadily increased over the last several decades, having expanded in scope to involve cooperation between European nations. Inside sources have revealed that the central area of Jan Mayen Island is the covert site of an underground NATO base that monitors activity above the site, as well as controlling all surface access points to the much larger Hyperborean temple network beneath.

In 2010, this entire region was strategically re-designated by the Norwegian government as a protected 'Nature Reserve' surrounded by a 200-mile exclusive Economic Zone. The new legislative policies serve to further restrict access to the covert submerged sites, and extends the cover-up tactics to support the secrecy of NATO operations in the area. The 1971 periscope photographs incited comprehensive satellite surveillance operations by US, Norwegian and Soviet military assets orbiting Earth, in efforts to determine off-world origins for the ET humanoid visitors.

Boreas underwater UFO base south of Jan Mayen Island, in the Norwegian Sea (70.6865°N, 8.96763°W, above) is located 3,766 miles from the Atlant Pyramid submerged off the north Florida coast; comprising 15.129% of Earth's mean circumference ($1^{21}/_{800}$). This resonant distance interval reflects the values of Fibonacci #904 (3,761.33... x 10^{-186}) in miles and Fibonacci #1127 (15.121... x 10^{-234}) in percent, ensuring placement within a nodal vortex of planetary infrasound resonance focused by the Orion Pyramids.

The Paleo-Sanskrit votive name 'Boreas' is composed of 4 Paleo-Sanskrit hieroglyphs, reading: **bo re a s**, meaning "Awakening (the) juncture, ah, from within", referencing the intuitive or psychic gifts conferred by internal exposure to the atomic radiations of Brammam bhasma (RaS) circulating in the body. The spiritual terminology of "awakening the juncture" refers to activation of the energy body's magnetic center through the regular ingestion of Rasayana elixirs, dispersing photons and electrons via the *photoelectric effect*.

The wealth of evidence from submerged Hyperborean sledline temples and related Scandinavian linguistic traditions confirms the unified origin of architectural and linguistic expressions. Their embedding of Paleo-Sanskrit votive phrases in place names and the names of endemic animal species reinforces the iconic visual imagery presented by the smoothly curving contours of Hyperborean levitation sledline temples.