



2

Levitation Sledlines
of Beringia

Levitation Sledlines of Beringia

The desolate Arctic region encompassing the Bering Sea of present-day Russia and the US presents landscapes of deceptive austerity that conceal a network of ancient, submerged megastructures that have not been identified by any previous researcher. These immense architectural sites were designed to depict both anthropomorphic and zoomorphic motifs that reference aerial prowess, as well as fertility symbolism.

Among the most iconographic Atlantean Period architectural complexes in Beringia is a graceful levitation sledline forming a long, smoothly curving *i* that encloses Najvak Lake, on Russia's Bering Sea coast (opposite). The pair of convergent levitation sledlines form the small, hooked beak of a bird of prey.

Comparison of local raptor species confirms that this submerged geopolymer structure was designed as the head and neck of a rough-legged hawk (*Buteo lagopus*, below), depicting their characteristic small beak and short neck that distinguish the species from all other types of hawks, ospreys and eagles.



Rough-legged hawk
Buteo lagopus

Najvak levitation sledline temple and underwater UFO base on the Bering Sea at Najvak Lake, Russia (64.415997°N, 172.241148°W, opposite) is located 5,806 miles from the Great Pyramid, comprising 23.325% of Earth's mean circumference ($^{146}/_{625}$). This resonant distance reflects the values of Fibonacci #1192 ($5,804.73... \times 10^{-245}$) in miles and Fibonacci #970 ($23.362... \times 10^{-202}$) in percent, ensuring efficient receptivity within the mandala of infrasound resonance transduced by the worldwide pyramid network.

According to the early 20th-century trance medium Edgar Cayce, the Atlantean pyramids were employed as a global weather modification system that prevented rainfall and instead watered the Earth in a fine mist. The regulation of atmospheric conditions was achieved by their technological generation of ULF standing waves reverberating between the temple walls of Atlantean geopolymer 'firestone' complexes distributed at nodal vortices in the Unity Field. A global mandala is defined by the quantum iterated function $[z_{n+1} = z_n^2]$.

The parallel, smoothly arcing arrays of grooved trackways were cast by the Atlantean builders of Beringia in highly specialized types of artificial stone that incorporated a vast assortment of powdered metals for conferring the properties of an *unconventional superconductor*. Various ferromagnetic, pyromagnetic and paramagnetic elements were mixed with rare earth elements at lower levels of concentration, enabling high-speed transit by magnetic levitation of sled platforms several inches above the firestone trackways.

Sectioned megalithic blocks forming the reinforced ceiling of the submerged megastructures were cast with a series of convergent sledline trackways that were carefully surveyed and laid out in long arcs that resemble glacial moraines, but are actually the architectural handiwork of Atlantean temple builders.



Rufous hummingbird, female
Selasphorus rufus

Ultra-low frequency resonance was focused and amplified by the world's pyramids and megalithic temples to provide high-amplitude pressure waves that induce the effect of pulsed superconductivity that enabled the levitation of specialized flying sleds. These silent Atlantean mag-lev vehicles were constructed on an *aurichalcum* (β - Ti_3Au) baseplate several inches thick, with the front end curving upwards like a toboggan.

Industrial scale construction of artificial isthmus and peninsular features were skillfully integrated into the pre-existing geological landscapes, forming rich estuary habitats for migrating birds, as well as for aquatic and marine organisms that flourish within the protective lagoon enclosures.

An extensive levitation sledline temple structure was constructed at the entrance of Siberia's Kenergyin Lagoon, cast by Atlantean builders with a complex network of geopolymer limestone trackways of various sizes that evoke an impression of a rufous hummingbird (*Selasphorus rufus*, above) seen in profile view.

The Sanskrit term for 'hummingbird' matches the Russian 'kolibri' and Spanish 'colibri'; composed of 5 hieroglyphs reading: **ko l i b ri**. This short votive name translates as "(The) egg (of the) essence (of) This, sounding (the) song" alluding to egg-shaped atmospheric plasma domes formed by infrasound resonance.

The beak of the hummingbird is depicted with a gracefully curving sledline that is replicated by an adjacent sledline forming the hummingbird's wingtip. The clear outline of a hummingbird's wing is reinforced by the contouring of the large intervening lagoon, effectively emphasizing the longer flight feathers in turquoise-green coloration when seen from high aerial perspectives. The grand scale of these gracefully curving sled trackways and interlinked underwater complexes has thwarted all recognition until the present disclosure.



Kolibri levitation sledline temple and underwater UFO base at Kunergvin Lagoon, Russia (66.978820°N, 174.2180753°W, above) is located 5,620 miles from the Great Pyramid, comprising 22.58% of Earth's mean circumference ($\frac{903}{4000}$). This radial alignment reflects the values of Fibonacci #1680 (5,620.18... x 10^{-348}) in miles and Fibonacci #56 (22.585... x 10^{-10}) in percent, conferring excellent reception of ULF waves focused by the Orion Pyramids. Furthermore, the site shows exact placement at 67 North latitude.

The impressive wing of the hummingbird temple megastructure is underlined by a latitudinal (or east-west) alignment, extending approximately 3.5 miles in width by 11 miles in length, covering an area greater than 38 square miles. The hummingbird's head covers a smaller additional area of several square miles.

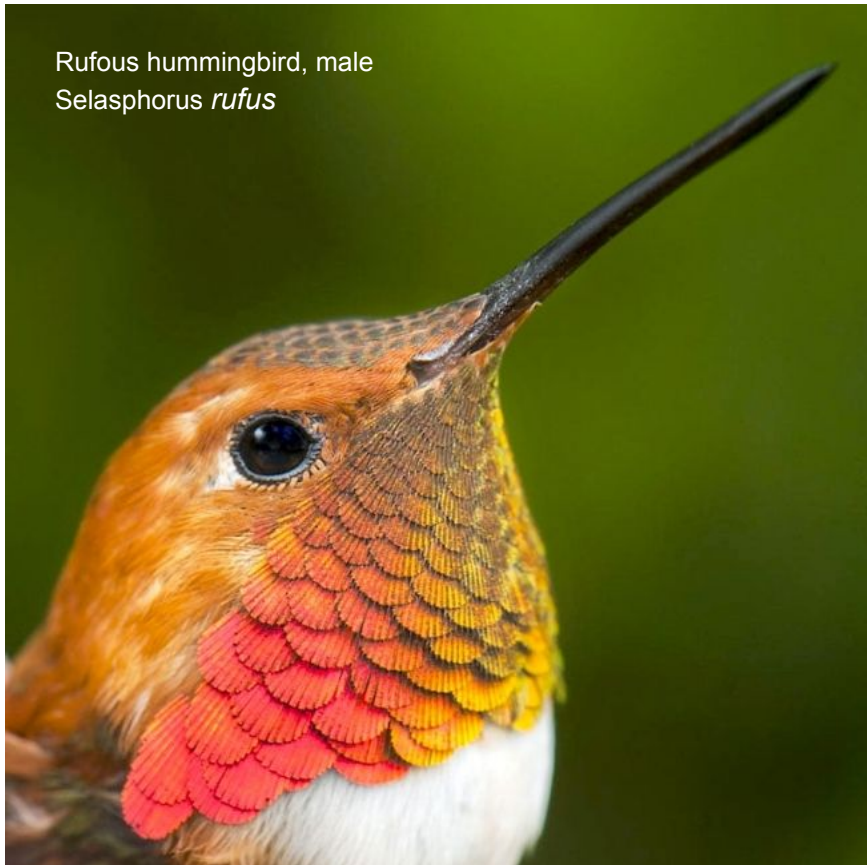
Kolibri levitation sledline temple at Kunergvin Lagoon is highly reminiscent of the hummingbird geoglyph that can only be seen from aerial perspectives above the Nazca Plain of Peru. A similar design was reiterated by a stunning crop circle formation reported on July 2, 2009 at Milk Hill in Wiltshire, England.

Similar hummingbird symbolism was also expressed in the design plan of an artificial island built as a levitation sledline temple in the Sea of Azov, Russia, to be discussed in forthcoming works. Hummingbird symbolism was used in the design of various Atlantean temple complexes in Beringia and Central Asia.

Rufous hummingbird motif
Beringia - Cape Kruzenstern, Alaska



A hummingbird-shaped levitation sledline temple in Alaska is formed by a large lagoon enclosed by a broad geopolymer isthmus designed to give the impression of a rufous hummingbird sipping nectar from a flower (opposite). The hummingbird's tiny feet have even been gesturally rendered to reinforce the chosen symbolic imagery, as do the series of sledlines replicating the raised red neck frills of rufous males.



Rufous hummingbird, male
Selasphorus rufus

These tiny aerial swashbucklers battle with other rufous males for territory and nectar sipping rights while monitoring the movements of all female rufous hummingbirds in the area. Hummingbird symbolism in ancient Sanskrit cultures around the world commonly associate the psychoacoustic effects of temple architecture with the low, throbbing sound produced by the extremely rapid beating of its tiny pair of wings. Ceramic whistling vessels of the Andes region often mimic the low, fluttering sound of the *colibri*.

Hummingbirds also demonstrate another impressive adaptation to cold weather and plunging night-time temperatures, by entering into a state of torpor which allows their body temperature to drop by up to 50° F below their active states. This adaptation draws an association with the yogi's ability to raise body temperature using *tumo* techniques.

Bering levitation sledline temple and underwater UFO base at Cape Krusenstern, Alaska (67.128512°N, 163.683885°W, opposite) is located 5,695 miles from the Great Pyramid of Giza, Egypt, comprising 22.88% of Earth's mean circumference ($^{143}/_{625}$). This radial distance corresponds to the values of Fibonacci #479 ($5,696.32... \times 10^{-97}$) in miles and Fibonacci #1147 ($22.873... \times 10^{-238}$) in percent, assuring efficient reception of cosmic and planetary infrasound resonance focused by the Orion Pyramid Complex.

The Paleo-Sanskrit regional place name 'Beringia' is composed of 6 hieroglyphs, reading: **beringia**, meaning "Activity (of the) song, (of the) essential spark (of) This, ah". This special moniker references the hyperdimensional effects of exposure to infrasound resonance in combination with the γ -ray emissions of Siddha bhasma elixirs containing radium sulfide (RaS) and a blend of metallic and mineral components.

Simultaneous exposure to those 2 powerful influences of high-intensity infrasound and γ -radiation induces the de-densification of all 3rd-density matter –including the human body– until a 4th-density (ie. atomically expanded) state of matter is achieved, thereby inducing optical invisibility. Instantaneous disappearance of exposed objects occurs as photons pass directly through the object's atomically expanded configuration.

Extreme advancement of the technological capabilities of Atlantean alchemists and aerospace engineers dictated the key structural features of levitation sledline temples housing spacecraft hangars used by many different sizes of ET humanoids. Exceptional social diversity among Atlantean colonies was referenced in psychic readings by Edgar Cayce, describing a cultural integration of giants, humans, hobbits and gnomes.

The paths of the giants' levitation trackways navigate through a network of very small intervening lakes with contoured shorelines that once housed the perimeter trackways of tiny gnome ET humanoids. Gnome sledline temples show the same characteristics as those of the giants, yet reduced in size by a factor of 10.

Snowy owl foot motif
Beringia - Cape Kruzenstern, Alaska



In one of the small lakes between the array of curving sledline trackways of the hummingbird isthmus is a connected set of tiny, lakeside sledlines forming a very small temple (67.1108203°N, 163.5913235°W, above) designed as a feathered foot of a snowy owl (*Bubo scandiacus*, below, opposite). This miniscule site was likely constructed by the ET fairy humanoids of Atlantis known worldwide since ancient times.

Geopolymer peninsula with small levitation sled trackways extending into a small lake was designed as the foot of a snowy owl, as a symbolic reference to Moloch. Like the Nimerigar ET gnome humanoids, the owl is a nocturnal predator with excellent hearing, silent flight and acute vision during the darkest nights.



Snowy owl
Bubo scandiacus



Snowy owl
Bubo scandiacus

The snowy owl was recognized among ancient indigenous cultures of the Arctic as a symbol of resilience, displaying special adaptations to survive in the severe Arctic climate. The Sanskrit word for 'owl' is 'uluka'. Among the shamans of Siberia and the Aleut of Alaska, the snowy owl is regarded as a vigilant hunter known for silent aerial stalking in the stillness of the night; *symbolizing communication with the spirit realm*.

A larger lagoon presenting another avian motif is seen further north along the northwest Alaskan coastline, consisting of >50 miles of coastal sledlines converging at the vertex of an artificial peninsula at Point Hope.



Cedar waxwing head motif
Beringia - Point Hope, Alaska

Sikhin sledline temple and underwater UFO base at Point Hope, Alaska (68.3501°N , $166.76460^{\circ}\text{W}$, above) is located 5,593 miles from the Great Pyramid, comprising 22.469% of Earth's mean circumference ($^{702}/_{3125}$). This radial distance alignment reflects the values of Fibonacci #1613 ($5,592.14... \times 10^{-334}$) in miles and Fibonacci #434 ($22.446... \times 10^{-90}$) in percent, conferring efficient reception of focused infrasound resonance.

The Atlantean sledline temple at Point Hope, Alaska shows a similar design as the Suolaskáiti sledline temple of Wrangel Island, Russia, showing the same long, curving convergent paths of sled trackways. Architectural repetition of bird symbolism throughout the temples of Hyperborea and Beringia highlight the Atlantean builders' prevalent cultural associations relating to rapid flight, aerial agility, vitality and fertility.

Ancient high-speed levitation superhighways required the significant alteration of extensive portions of the Paleo-coastline that can still be readily observed today as isthmus and cape formations enclosing outflows of rivers to form extensive estuary environments as primary habitat for diverse waterfowl and marine life.

The graceful geopolymer limestone trackways and protected lagoons of Sikhin temple were designed as the crested head of the cedar waxwing (*Bombycilla cedrorum*, below). While waxwing bird species are not endemic to Southeast Asia, the Sanskrit term for a crested birds is 'sikhin', meaning "crested one", which has been applied here in the naming of this waxwing-shaped Atlantean sledline temple megastructure.

The enormous scale of the submerged superhighway complex is difficult to fully grasp. The full length of the sledline trackway arcs exceeds 35 miles, converging at Point Hope, Alaska, previously known by the Iñupiak name 'Tikiġaq'. *The crested avian head measures ~11 miles from the tip of the beak to the neck.*



Distinguishing characteristics of the head of a cedar waxwing include a band of black plumage around the eyes, as depicted in the contours of the sledline temple's northern lagoon. The bird's name refers to the wax-like tips of their wing feathers, which are brightly colored. The wingtips of cedar waxwings display a bright red coloration complementing its yellow underbelly and the tips of its tail feathers (above).

In modern times, Bohemian waxwings are the only species of waxwings that participate in mass seasonal migrations to Alaska. The depiction of cedar waxwings among the Atlantean Era architectural complexes of the Arctic suggests that species was also a seasonal visitor to Alaska during the Late Paleolithic Period.

As with the bright plumage of waxwings, the distinctly avian design of the artificial stone coastline stands out sharply from its surroundings, bringing attention to its majestic beauty. While many coastal levitation sledline complexes were designed to blend seamlessly into the natural seascape, the bold layout of Sikhin levitation sledline complex at Point Hope, Alaska was designed to attract attention from aerial viewpoints.

Psychic Life Readings by the Sleeping Prophet Edgar Cayce described the development of Lemuria and Atlantis as passing through 3 distinct phases, punctuated by 3 cataclysms revealed by ice core drilling:

- 1) ~52,300 bp – Volcanic mega-eruption of Maninjau Volcano in Padang, Sumatra
- 2) ~30,240 bp – Volcanic mega-eruption of Kwanto Basin, Japan & Great Flood Event
- 3) ~12,900 bp – Meteoric impacts in the North Atlantic, Greenland & North America

In line with these determinations, the global network of Atlantean Era sledline temples was constructed during the 3rd and final phase of the Atlantean high civilization, spanning from ~30,240-12,900 years ago.

Avian embryo motif
Beringia - Ku'ukpowruk River, Alaska



Heading inland from the coast northeast of the Sikhin levitation sledline temple is another avian-inspired architectural complex formed as an artificial mountain. While the long, coastal levitation superhighways of Beringia were built very close to sea level, inland sledline temples were cast on a more majestic scale. Dozens of Atlantean Era megacity structures have been discovered within Alaska's North Slope County.



Near the Kukpowruk River, an immense artificial mountain was beautifully designed as an *avian embryo* during early incubation in the egg (at left). The eye of the embryo resembles a disk-shaped spacecraft. Successive floors were supported by megalithic colonnades to achieve a sequence of wide, level terraces to accommodate sled circuits.

The grand, multi-tiered structure of this gargantuan geopolymer stone building matches the same basic architectural description of Atlantean temples given by trance medium Edgar Cayce (Reading 294-149), yet rising at least 9 levels above the original surface of the tundra. Each level of the monumental building could be quickly circumnavigated by the use of high-speed aurichalcum levitation sleds running on radial trackways covering each gigantic terrace.

Every side of this gargantuan temple structure was designed to integrate a complex network of levitation sledline trackways along a series of level, curving terraces designed as a bird embryo. The great eye of the avian embryo is shaped to replicate the form of a lens-shaped spacecraft. The immense proportions of this Atlantean temple complex is just awe-inspiring, covering some 2 x 1.5 miles in estimated size. The remains of hundreds of levitation sled trackways can be readily observed, converging into a narrow slot canyon with collapsed tunnel entrances where sled traffic once entered the city on many different levels.

Khechara levitation sledline temple and underground UFO complex near the Kukpowruk River, Alaska (68.775677°N, 162.820835°W, opposite) is located 4,226 miles from the submerged Atlant Pyramid off Florida's Blake Escarpment, comprising 16.977% of Earth's mean circumference ($^{17}/_{100}$). This resonant distance corresponds to the values of Fibonacci #2000 ($4,224.69... \times 10^{-415}$) in miles and Fibonacci #376 ($16.977... \times 10^{-78}$) in percent, assuring efficient reception of focused infrasound standing wave resonance.

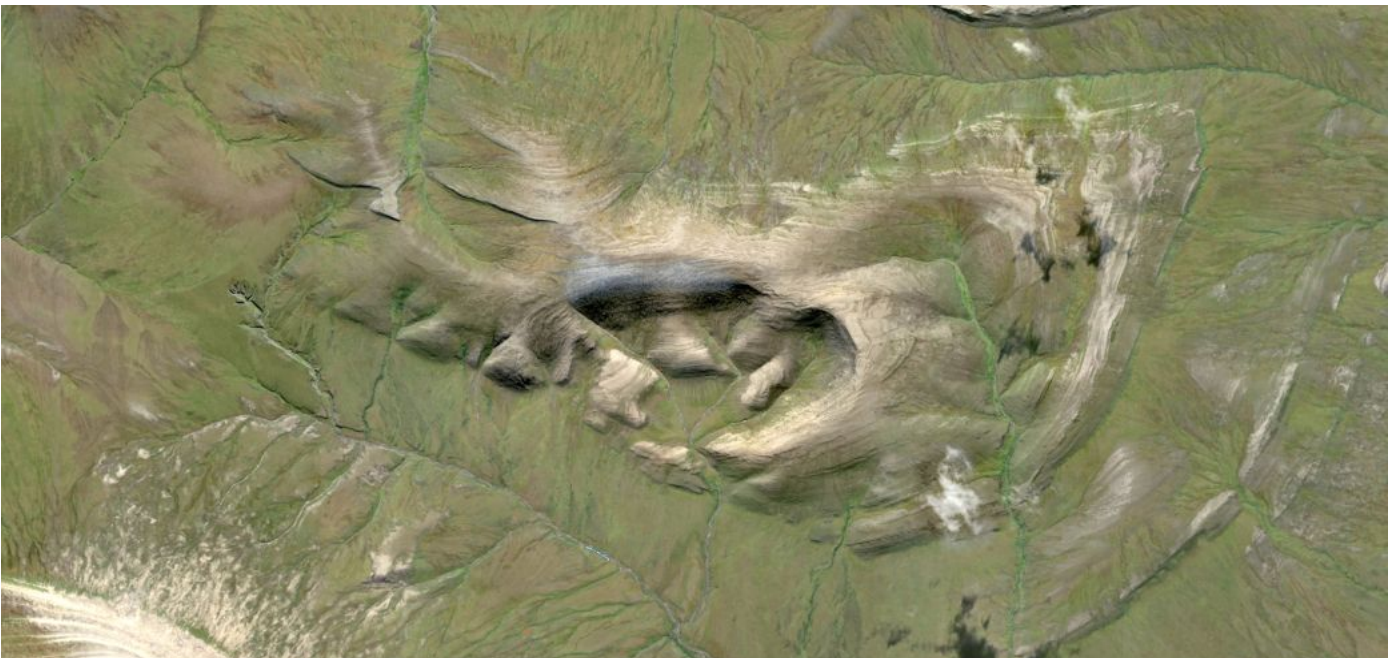
The zoomorphic fertility symbolism of an embryo incubating within an egg references hi-tech Atlantean psychoacoustic waterbirthing practices that informed the design of the innermost chambers of the Great Pyramid of present-day Giza, Egypt. According to Life Readings by Edgar Cayce, the Great Pyramid was originally called the Temple of Beauty for *conferring genetic enhancement through gestation practices*.

The more ancient Paleo-Sanskrit form of the votive name 'Ku'ukpowruk' is composed of 7 hieroglyphs reading: **ku uk p o w r uk**, meaning "Whereby (the) tranquility (of) inner joy, oh, (of the) mark (of the) turning tranquility". This sacred name refers to the inner peacefulness and genetic upgrade induced by exposure to the ULF waves of cosmic and planetary resonance focused by the Orion Pyramid Complex.

The avian references depicted by many levitation sledline temples alludes to seeing the sites from aerial perspectives. Located 4 miles to the east of the avian embryo-themed Khechara temple is another artificial ridgeline complex formed by the successive tiers of an ancient megalithic building. The entire site was cast in geopolymer stone, designed as the upper face and hairy hand of a giant ramo ET humanoid.



Devouring ramo motif
Beringia - Ku'ukpowruk River, Alaska





Sasquatch, juvenile male
Sylvanic Valley, BC, Canada

The massive, wrinkled brow of the ramo face was perfectly rendered in stone. A genuine photograph of a sasquatch male juvenile taken by T. Standing in Sylvanic Valley, BC (above), shows the same triad of ridges running across the upper bridge of the nose, between the eyes and below the heavy brow. *The sasquatch giants are a hybrid species born from human surrogate mothers implanted with ramo semen.*

Bhakṣin Ramo levitation sledline temple and underground UFO base near the Kukpowruk River, Alaska (68.751495°N, 162.548904°W, opposite) reflects the same resonant alignment as the Khechara complex. In Classical Sanskrit, the adjective 'bhakṣin' signifies "devouring"; used here for the descriptive site name.

Bhakṣin Ramo temple is situated just 2 miles to the southwest of an even more impressive levitation sledline temple megacity complex designed to give the clear impression of a giant's foot (overleaf). The spectacular monumental format of the artificial stone building incorporates avian imagery into the stacked forms comprising the upper levels, reaching a high point in the giant eye of an incubating bird embryo.

Ramo foot, bird motifs
Beringia - Ku'ukpowruk River, Alaska



Curvaceous contours forming the stylized outline of the foot of a giant ramo ET can be clearly seen from space, with the building's upper tiers (opposite) echoing the avian embryo head motif of Khechara temple. Used in a descriptive name for this temple, the Classical Sanskrit word 'patana' signifies the act of "flying".

Patana-Ramo levitation sledline temple and underground UFO base near the Kukpowruk River, Alaska (68.811400°N, 162.366126°W, opposite) shares the same resonant alignment as the lesser pair of nearby megacities. Each of these sites preserves an abundance of aurichalcum (β -Ti₃Au) fragments and tungsten (W) micro-spirals deposited in the trackway grooves by the malfunction of mag-lev vehicles at high speeds.

Extending for several dozen miles eastward from the Kukpowruk River area are a series of conjoined megacity complexes built into the North Slope landscape that do not show overt zoomorphic symbolism, yet follow the same construction technique of layering one tier upon the next in a series of wide terraces.



Levitation sledline temple cities
Beringia - Utukok River, Alaska

Utukok levitation sledline temple and underground UFO base near the Utukok River, Alaska (68.984816°N, 161.395469°E, above) is located 5,581 miles from the Great Pyramid; comprising 22.42% of Earth's mean circumference ($^{897}/_{4000}$). This resonant distance interval reflects the values of Fibonacci #211 (5,583.50... x 10⁻⁴¹) in miles and Fibonacci #879 (22.420... x 10⁻¹⁸³) in percent, ensuring efficient ULF wave reception.

The Paleo-Sanskrit votive place name 'Utukok' is composed of 4 hieroglyphs, reading: **u tu ko k**, meaning "Oh, (the) conferring (of the) egg (of the) Virgin". This sacred name references the egg-shaped domes of HHO plasma formed by high-amplitude infrasound standing wave resonance focused by the pyramids, which were praised for their conference of genetic purification and enhancement by biophotonic excitation.

Fertility symbolism among the sledline temples of Beringia also included depictions of maternity motifs. The most conspicuous example shows a *gnome breast* in profile view, with the curving levitation trackways forming their characteristic large areola (overleaf). The fractal network of rivulets that naturally formed in the mud of the lagoon gives a strong impression of the vasculature and mammary gland structures of the female gnome breast, resembling x-ray mammography scans taken by modern-day physicians (overleaf).



Gnome breast motif
Beringia - south of Ekuk, Alaska

Breastfeeding symbolism references sacred waterbirthing and psychoacoustic natal practices conducted at all Atlantean temple complexes, elevating gestation and motherhood as one Divine, life-giving process.

Yaksha-Kuca levitation sledline temple and underwater UFO base south of Ekuk, Alaska (58.49335°N, 158.71894°W, opposite) is located 4,225 miles from the submerged Atlant Pyramid off northeast Florida, comprising 16.97% of Earth's mean circumference ($\frac{17}{100}$). This resonant distance interval corresponds to the values of Fibonacci #2000 ($4,224.69... \times 10^{-415}$) in miles and Fibonacci #376 ($16.977... \times 10^{-78}$) in percent, assuring placement within a nodal vortex for maximal reception of focused infrasound resonance.

While it's easy to appreciate the seemingly 'natural' beauty of sledline temples, this is a calculated illusion. The serene setting of the Alaskan far north was shattered by one of the most important and yet completely suppressed UFO encounters ever reported by US Air Force personnel. On July 29, 1979, a high-altitude aerial encounter with multiple spacecraft occurred north of Point Barrow, Alaska (NUFORC report 74771):



We saw 6 disk-shaped aircraft while stationed in the USAF in Alaska. Back on July 29, 1979 myself and 5 other airmen were flying north of Pt. Barrow, Alaska on war-game maneuvers at an altitude of 30,000' in a USAF C-141.

Normally it's overcast in... the Arctic Ocean. However, on this rare occasion it was almost clear down to the Earth's surface on this day, And we could clearly see the Arctic Ocean devoid ice packs below us. All at once we noticed an anomaly –a darkened area below and ahead of us it looked a like a depression on the Arctic Ocean.

No, [it was] not a depression more like an opening or a hole in the ocean, and from our estimation it looked to be at least 90 miles or so across, if not more, and the nearer we got to the lip of the opening the harder the C-141 was to control and keep in flight.

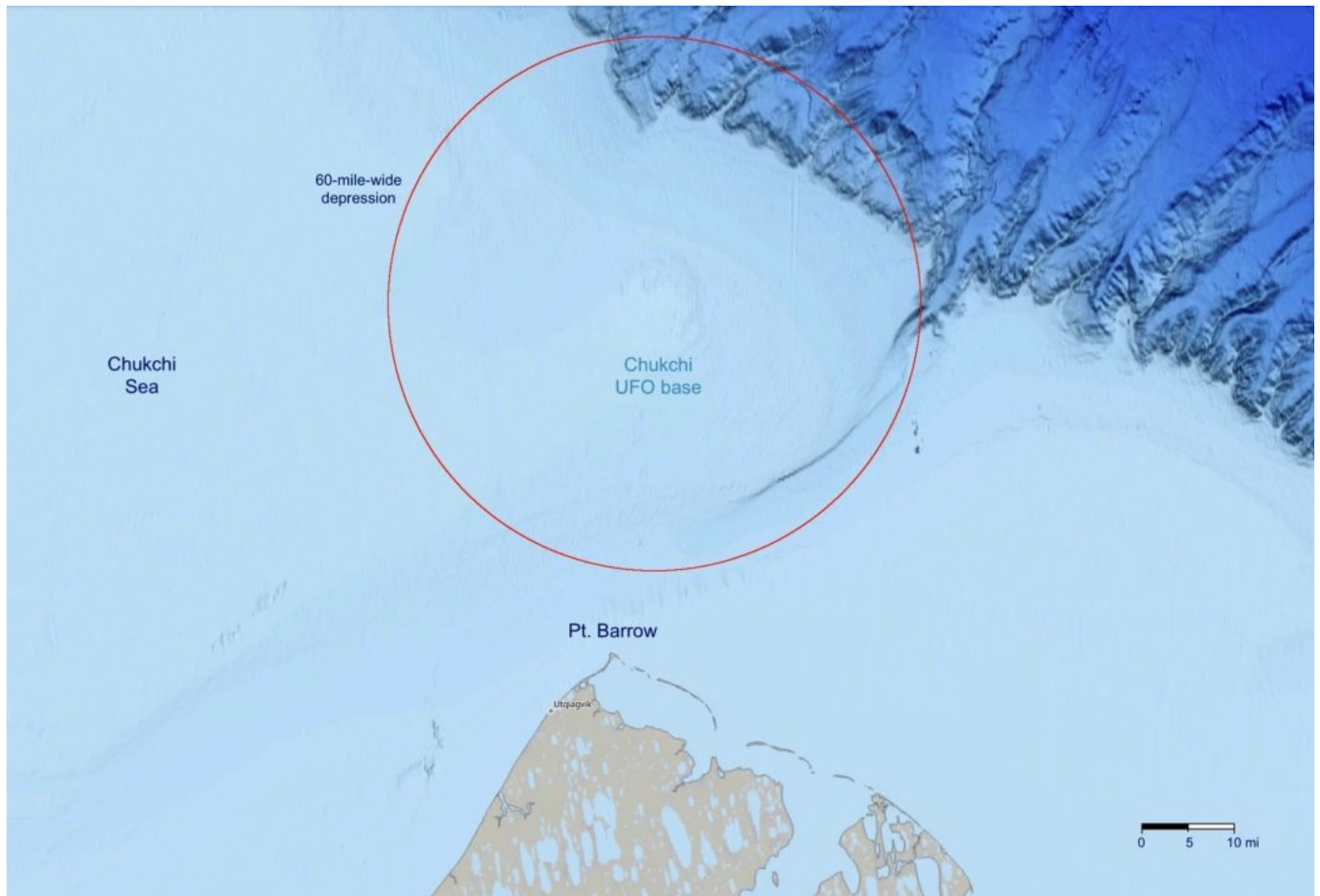
Suddenly our flight compass started spinning and other flight instruments started malfunctioning. All at once our aircraft dropped from 30,000 to 15,000 feet in a matter of seconds, where we were finally able to regain control. That's when my flight crew and I noticed that flying below us there were 6 disk-shaped aircraft.

As we watch them they flying they suddenly as if they noticed our presence, altered their course directly toward our aircraft. In a matter of just seconds they were along side of us. We took several photographs and it was as if they were posing for us as we snapped pictures of them. All at once the disk shaped craft started glowing and suddenly shot straight up in the air and were instantly out of sight.

We radioed and reported our encounter and our discovery of the polar opening, and its exact location by way of latitude and longitude coordinates to Ellison Air Force Base, Alaska and we were then given strict orders to not discuss it with each other or even our immediate family members. Upon landing back at Ellison Air Force Base we were placed under strict quarantine for several days. All the flight logs and photographs we took of the disk shaped aircraft were classified Top Secret with no access.

And to get out of quarantine we were ordered to agree that we didn't have the encounter that we had, or saw what we saw, and to make sure we didn't talk to each other about the encounter. We were all separated, and sent to different bases scattered throughout the United States.

Sudden personnel reassignments are standard information suppression tactics that have been applied to this stunning July, 1979 UFO encounter involving invisible forcefields deployed over great distances. At the epicenter of the immense circular depression observed in the Chukchi Sea is a submerged UFO base.



Chukchi levitation sledline temple and underwater UFO base north of Point Barrow, Alaska (71.92481°N, 156.27812°W, above) is located 5,398 miles from the Great Pyramid, which constitutes 21.69% of Earth's mean circumference ($^{271}_{1250}$). This resonant distance interval is reflected by the values of Fibonacci #1144 ($5,399.77... \times 10^{-235}$) in miles and Fibonacci #1812 ($21.682... \times 10^{-378}$) in percent, securing ULF receptivity.

This complex was constructed as a wide, oval-shaped plateau cast in geopolymer limestone that rises to an apex at -59 m depth. The site was designed with concentric trackway circuits swirling to the central plateau. *The seawater was repelled while modifications to the geopolymer stonework were accomplished.*

Chukchi temple is situated just 40 miles north of Point Barrow, Alaska, suggesting the two sites are linked by an interconnecting tunnel system. The ancient region name 'Chukchi' shows a Paleo-Sanskrit origin, being composed of 4 glyphs reading: **ch uk ch i**, meaning "Promising tranquility; (the) promising (of) This". This simple votive expression refers to the enhanced meditative awareness instilled by ULF resonance.



Patala-Matsya sledline temple
Beringia - Point Barrow, Alaska

UFO eyewitness accounts were also reported by residents living in the region at Point Barrow, Alaska. Just south of the Chukchi Sea UFO base complex, a UFO sighting was reported 2 years later on June 15, 1981 at Point Barrow, Alaska –the northernmost point in the United States (NUFORC report 31862):

This was around 1980-82 in Point Barrow, Alaska. My dad worked for the Police Dept. and got a call around 10pm that some tourist had seen a [glowing cylindrical] UFO near the beach, and that they had burned half of their faces off of the reflection from the ice and the UFO. So we hurried in my dad's car and drove south of where it was reported, and a few minutes later, I watched a red sliver of light hover for a few seconds and then take off straight up and disappear. It never made a sound, and moved so fast –and like nothing I had ever seen before.

The facial burns received by the witnesses resulted from exposure to high-energy γ -rays emitted from the spacecraft's cylindrical hull at relatively close range. The potentially fatal hazards of close interactions with large radioactive spacecraft is the reason for the brevity of most reported close range UFO interactions.

Police Department eyewitnesses to the early 1980s Arigilivik Beach UFO encounter were not aware that they were standing on the roof of a submerged UFO base disguised as a natural isthmus formation. The coastal levitation sled superhighways extend >50 miles to the southwest of the submerged UFO base, constructed to form the symbolic image of a giant oarfish (*Regalecus glesne*, overleaf) from the deepsea.

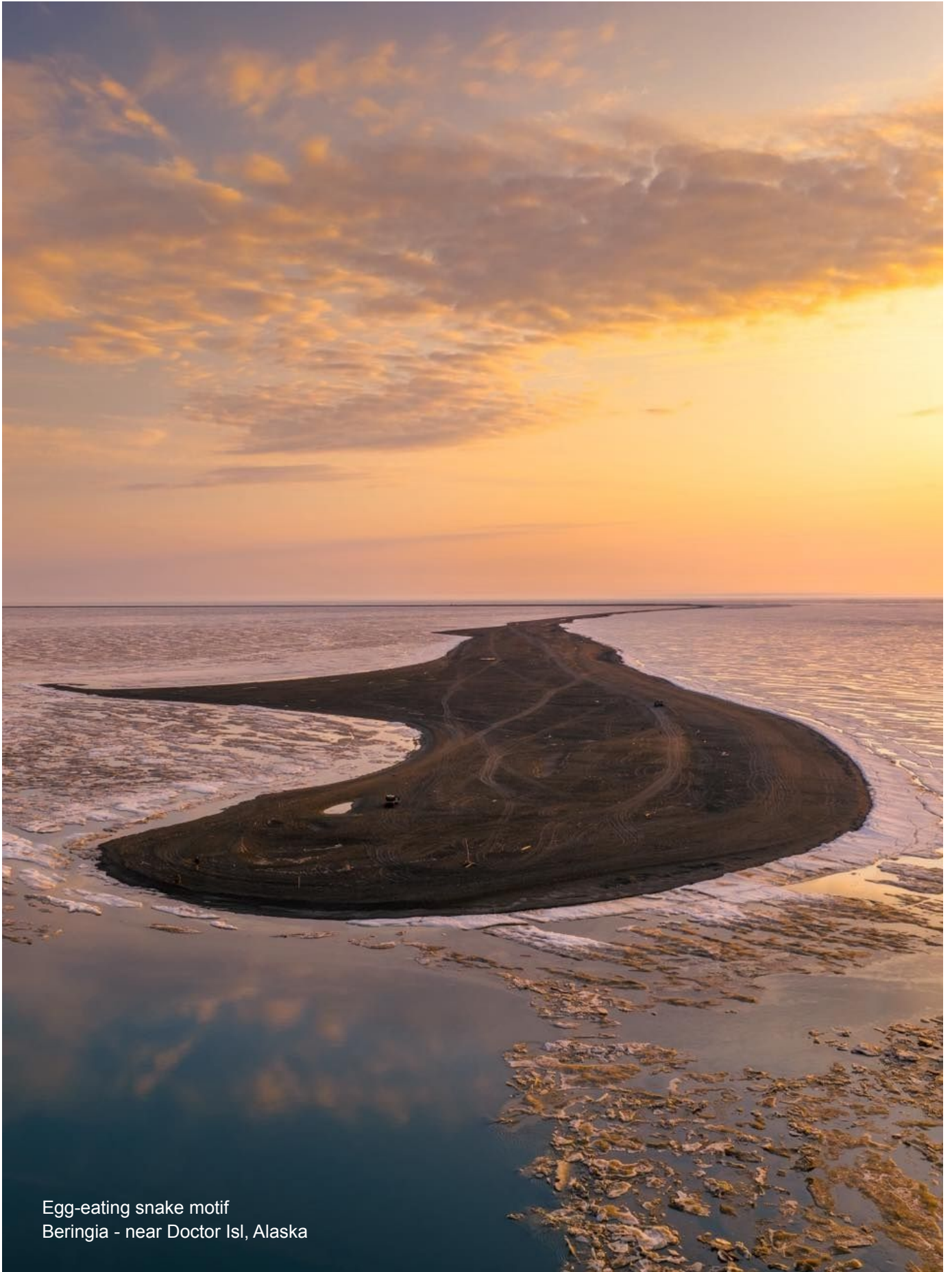
Patala-Matsya levitation sledline temple and underwater UFO base at Point Barrow, Alaska (71.383606°N, 156.464847°W, above) is located 5,435 miles from the Great Pyramid, comprising 21.83% of Earth's mean circumference ($^{273}/_{1250}$). This resonant distance interval reflects the values of Fibonacci #766 (5,433.09... x 10^{-157}) in miles and Fibonacci #989 (21.841... x 10^{-206}) in percent, ensuring ULF wave reception at the site. The descriptive Sanskrit site name 'Patala-Matsya' is a literal translation of "abyssal fish" (ie. giant oarfish).



Giant oarfish motif
Beringia - Point Barrow, Alaska



Giant oarfish
Regalecus glesne



Egg-eating snake motif
Beringia - near Doctor Isl, Alaska

A series of narrow isthmus-like barrier islands form a submerged temple chain, with one site designed to resemble the body and head of an egg-eating snake while consuming its meal (opposite). The adjacent island also demonstrates zoomorphic sledline temple features, extending for <1 mile in length and having been cleverly designed to resemble the head and short neck of a semi-aquatic avian species (below).



Known today as Doctor Island, the contours of this small levitation sledline temple and underwater UFO base (71.35932°N , $156.33956^{\circ}\text{W}$, above) were designed to give an impression of the head and neck of a common murre in a diving pose. The outstretched neck is depicted in a stylized format to emphasize the wave-like shape of the murre's white-and-brown neckline to show the 'pra' glyph; meaning "advancing".



To the southeast of Doctor Island is yet another avian-themed artificial structure that mimics the distinctive profile of a rock ptarmigan with its head raised (above). Repetition of avian imagery known from the much larger temples of Hyperborea is an indication of the strong continuity of cultural imagery during that period.

Leprechaun head profile motif
Beringia - Leffingwell CS, Alaska



Yaksha-Noaidi levitation sledline temple and underwater UFO base near Leffingwell Camp Site, Alaska (70.189343°N, 146.056473°W, above) is located 5,526 miles from the Great Pyramid, comprising 22.20% of Earth's mean circumference ($^{111}/_{500}$). This resonant distance interval reflects the values of Fibonacci #77 ($5,527.93... \times 10^{-12}$) in miles and Fibonacci #745 ($22.197... \times 10^{-155}$) in percent, ensuring ULF reception.

'Noaidi' is a Northern Sámi word for "shaman"; composed of 4 Paleo-Sanskrit glyphs reading: **n o a i d i**, meaning "(The) essence, oh; aye, desirous" —once again referring to the effects of radium sulfide (RaS). This submerged geopolymer structure was designed with contours representing the stylized profile head of a leprechaun ET humanoid, showing their characteristic long pointed noses and low, sloping foreheads. The quadrupedal leprechauns are also known for their raised nasal bridge and diminished brow structures.

Another artificial island situated nearby has been cleverly designed to resemble a fork-tailed flycatcher (*Tyrannus savana*, overleaf), emphasizing its long, elegant tail feathers and its head turned in profile.

Fork-tailed flycatcher motif
Beringia - near Nuiqsut, Alaska





Fork-tailed flycatcher
Tyrannus savana

Kalinga levitation circuit temple and underwater UFO base northwest of the small community of Nuiqsut, Alaska (70.579952°N, 151.976506°W, opposite) is located 5,499 miles from the Great Pyramid, comprising 22.09% of Earth's mean circumference ($1^{1/50}$). This radial distance reflects the values of Fibonacci #455 (5,494.03... x 10⁻⁹²) in miles and Fibonacci #678 (22.086... x 10⁻¹⁴¹) in percent, ensuring ULF reception.

The long, split tail and small beak of an acrobatic, insect-eating bird are indicated by the contours of this geopolymer structure, confirming it was designed as a fork-tailed flycatcher; called a 'kalinga' in Sanskrit.

The skies of Alaska's Bering Sea coast are the domain of transdimensional spacecraft that emerge from –and retreat back into– concealed sledline temples embedded in coastal zones. Many sightings of aerial craft near concealed Atlantean levitation temple sites include a pair of UFO encounters in 2015 and 2016, reported in the immediate vicinity of Dillingham Airbase, Alaska (NUFORC sightings 181878, 126308):

Report 181878 – Occurred: 2024-06-15 at 02:25am

Direction: Above the bay & directly over my house

I went to smoke on my porch and noticed 2 lights that at first I thought were stars and said to my son that those stars look super bright and super close. Then they both moved straight up first slowly then gone. I know what I saw and decided to check my cameras and sure enough my camera system caught them. I don't know how to upload my home security camera on here. I'm not tech savvy but do have the event recorded.

Report 126308 – Occurred: 2016-03-11 at 07:00am

An object was circling very low around Dillingham downtown area with 3 lights one orange and 2 white. After following the [glowing, triangular] object [with bright lights on it], it stopped for 5 minutes above the tundra then continued to circle around. It continued low towards the tundra but couldn't drive through the tundra, so it just faded slowly. Before we saw this [aerial object], our car had a hard time turning on.

The basic details of the brief UFO sightings reported by residents of Dillingham, Alaska include aspects that are often reported by various eyewitnesses, including the malfunctioning of automobile engines when the UFO is nearby, which then automatically start themselves after the object has rapidly departed.

The Dillingham UFO encounters are directly related to regular aerial observation by spacecraft deployed from a UFO base submerged in a riverbed, situated just 42 miles south of the small military town.



Ekuik levitation sledline temple and underwater UFO base near Ekuik, Alaska (58.78954°N , $158.857265^{\circ}\text{W}$, above) is located 6,290 miles from the Great Pyramid, comprising 25.27% of Earth's mean circumference ($^{101}/_{400}$). This radial distance interval approximates the values of Fibonacci #417 ($6,285.80... \times 10^{-83}$) in miles and Fibonacci #640 ($25.269... \times 10^{-133}$) in percent, conferring efficient ULF wave reception at the site.

Furthermore, this submerged temple site is situated 4,226 miles from the submerged Atlant Pyramid off the northeast coast of Florida, comprising 16.98% of Earth's mean circumference ($^{17}/_{100}$). This resonant distance corresponds to the values of Fibonacci #2000 ($4,224.69... \times 10^{-415}$) in miles and Fibonacci #376 ($16.977... \times 10^{-78}$) in percent, confirming site alignment within a vortex point in the Unity Field mandala.

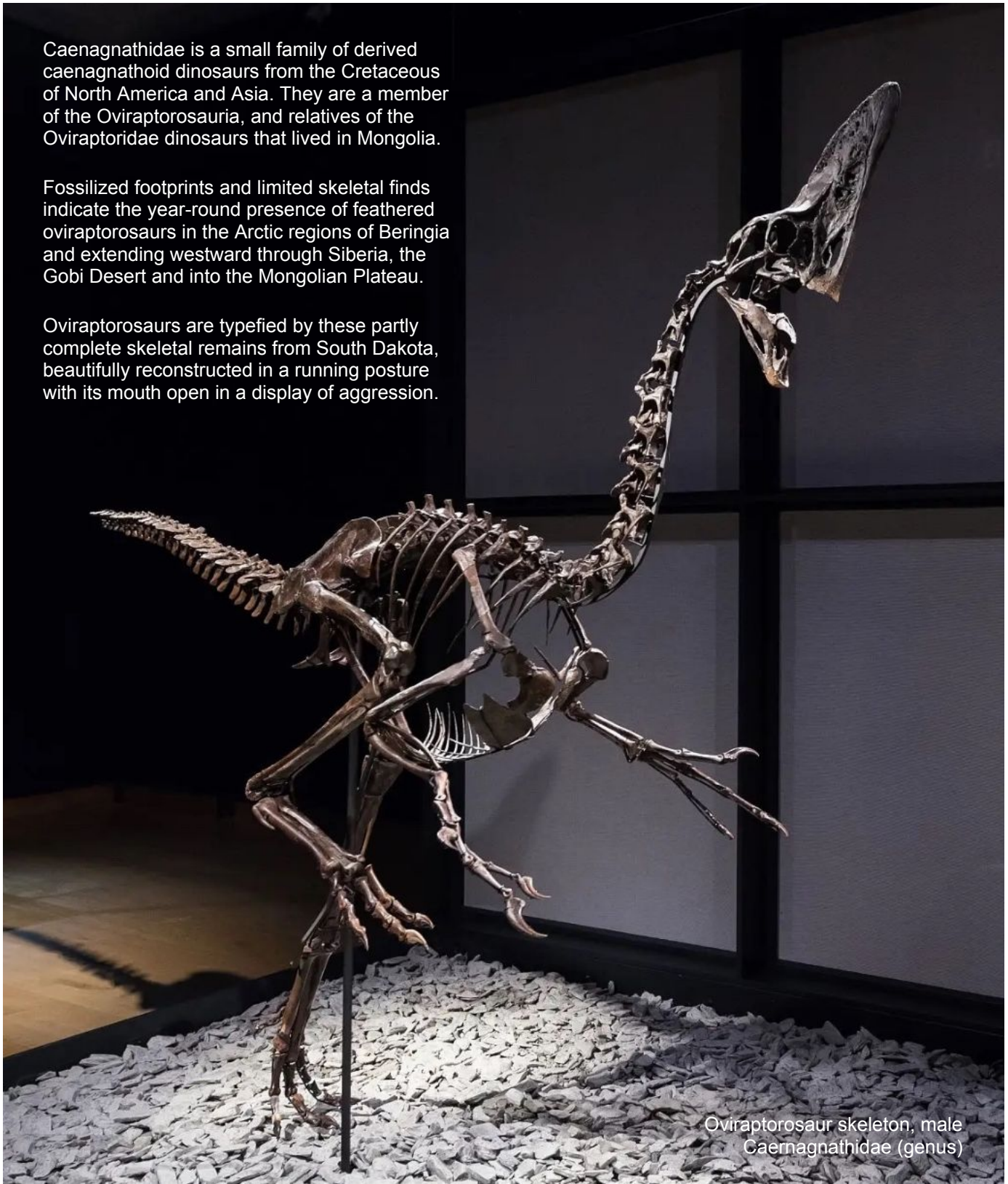
The Paleo-Sanskrit placename 'Ekuik' is a simple votive sentiment composed of 2 glyphs, reading: **Ek uk**, meaning "(The) One; (of) tranquility" —*alluding to the inner peace conferred by the knowledge of Oneness.*

This river-contoured geopolymer sledline temple was strategically designed to control the flow of river water before it escapes into the sea, showing the design of the long neck and head of an iconic dinosaur species classified as *oviraptorosaurs*. This site replicates the Mongolian oviraptor design of a levitation sledline complex in Namucuo Lake, Tibet, formerly known as the lands of Taoi —according to Edgar Cayce.

Caenagnathidae is a small family of derived caenagnathoid dinosaurs from the Cretaceous of North America and Asia. They are a member of the Oviraptorosauria, and relatives of the Oviraptoridae dinosaurs that lived in Mongolia.

Fossilized footprints and limited skeletal finds indicate the year-round presence of feathered oviraptorosaurs in the Arctic regions of Beringia and extending westward through Siberia, the Gobi Desert and into the Mongolian Plateau.

Oviraptorosaurs are typified by these partly complete skeletal remains from South Dakota, beautifully reconstructed in a running posture with its mouth open in a display of aggression.



Oviraptorosaur skeleton, male
Caenagnathidae (genus)

Significant paleontological links between the lands of Mongolia and Alaska were specifically referenced by levitation sledline temples in both regions that were designed in the form of an oviraptor's head and neck. Specialized paleontological knowledge has been previously identified in the polychrome *kero* vessels of Puma Punku and Tiwanaku, Bolivia. Crested oviraptorosaurs depicted in the levitation sledline temples of Beringia were complemented by various temples designed as crested birds, like the common merganser.

Merganser head motif
Beringia - Mud Bay, Alaska



Manitundak levitation sledline temple and underwater UFO base in Mud Bay, Alaska (55.9065764°N, 160.8961694°W, above) is located 6,475 miles from the Great Pyramid; comprising 26.01% of Earth's mean circumference ($13/50$). This resonant distance interval approximates the values of Fibonacci #819 ($6,477.27... \times 10^{-168}$) in miles and Fibonacci #597 ($26.069... \times 10^{-124}$) in percent, confirming excellent reception at a nodal point of infrasound standing waves focused by the Orion Pyramid Complex.



Common merganser
Mergus merganser

The Sanskrit word for the common merganser bird is 'manitundak', used in the naming of this temple site. Diving sea bird motifs were employed often by Atlantean temple architects, referencing their spacecrafts' technological mastery of dynamic environments that include aquatic, atmospheric and space domains which remain largely beyond the capabilities of modern human technology now available to the public.

The merganser-shaped sledline temple in Alaska is reminiscent of cormorant temples observed in other regions of the world, including artificial islands found off the coastlines of Denmark and Madagascar. The use of bird imagery in the construction of Atlantean sledline temples is seen in every region of the world, referencing the hi-tech aerial capabilities of antigravitic spacecraft deployed from underwater complexes.

Surprising hyperdimensional capabilities of Atlantean spacecraft enable their transit directly through the artificial rock walls and ceilings of submerged subterranean complexes, as implicated in the case of a young man who reported a UFO landing and telepathic communication with the witness's *future self*.



Numerous NUFORC UFO reports cluster along the eastern shores of Cook Inlet, Alaska, which is also where the ET encounter case of David Caywood took place in September of 1976 during evening hours:

13-year old David E. Caywood walked out into a semi-solid bog and saw two ships hovering low over the area. Suddenly, a blue beam of light flashes from the underside of one of the ships and a man with a back walks out of the beam. Somehow Caywood realizes that the man is himself as an adult (!).

The older Caywood, smiling approaches the young Caywood and stands face to face with him. He tells him not to be afraid, that very soon he "will be involved in the greatest adventure of his life." That he would someday help many, many people. He was told that one day when the time is right he will "wake up" and see all things clearly as if for the first time. He tells him to remember that he is loved. With that he turns and goes back into the beam and disappears. The ships leave, the winds pick up and the witness's memory of the event ends.

The highly unusual ET contact report made by the young David Caywood left many people scratching their heads. US census records confirm David E. Caywood was born in Los Angeles, California on September 21, 1962, and died in California on June 7, 2004 at age 42. Information from reliable sources suggests that David had, in fact, had an encounter with his Higher Self; an ET from another planet that informed him of the amazing events in his future lifetime, as a young man preparing for the imminent Ascension of Earth.

Contactees such as David Caywood are only rarely able to learn the origin of their ET visitors. Specialized knowledge pertaining to Atlantean levitation sleds provides the broader context to identify the architectural alterations made to the shorelines of Kalgin Island, situated several miles from the UFO landing site.

Rough-legged hawk head, wing motifs
Beringia - Kalgin Island, Alaska



Kalgin levitation sledline temple & underwater UFO base at Kalgin Island, in the Cook Inlet, Alaska (60.3723172°N, 151.9647817°W, above) is located 5,812 miles from the Great Pyramid; comprising 23.35% of Earth's mean circumference ($\frac{146}{625}$). This resonant distance interval approximates the values of Fibonacci #1192 (5,804.73... x 10⁻²⁴⁵) in miles and Fibonacci #970 (23.362... x 10⁻²⁰²) in percent.

The Paleo-Sanskrit votive name 'Kalgin' is composed of 4 glyphs, reading: **ka l g in** , meaning "Following (the) essence (of the) spark (of) glory." This sacred name alludes to beneficial effects of consumption of Siddha bhasma elixir blends, emitting γ -rays to engage the DNA damage response for genetic purification.

Kalgin Island has been the subject of heavy satellite surveillance by the US military, due to the repeated sightings of invisible spacecraft revealing the covert presence of a pair of partly submerged geopolymer megastructures designed as the head, neck and wing of a rough-legged hawk (*Buteo lagopus*, below).



Kalgin Island's northeast point has been modified to accommodate sled trackways that smoothly converge at the terminus, which gives the visual impression of the profile of a hawk's beak when seen from above. A second arrangement of sled trackways encloses a shallow lagoon in the southeast area of Kalgin Island, giving the impression of the leading edge of the hawk's wing hanging down below its head (opposite).

These highly conspicuous landscape features have gone completely unnoticed until the present exposé, revealing the mag-lev systems and submerged megastructures of the Atlantean crypto-civilization, which conceals itself at the margins of coastal estuaries where the fresh water of rivers pour out into the sea.

Unusual encounters with ET visitors have also been reported in the northern part of Cook Inlet, with over 175 NUFORC UFO reports clustering together in the greater Anchorage area. A domestic intrusion by a giant, naked ET with large, round eyes was reported to have occurred on November 11, 2004 at 2:30 am, near Anchorage. A tall, glowing ET figure suddenly appeared in the bedroom of the surprised eyewitness:



Rough-legged hawk head, wing motifs
Beringia - Kalgin Island, Alaska



Albatross head motif
Beringia - Fire Island, Alaska



Albatross head motif
Beringia - Fire Island, Alaska

D.H. had awakened after having a rather prominent dream. No lights were on the bedroom of the home within he was living but he saw the very clear image of a non-human figure in his bedroom through the mirror. No attempt (to speak or telecommunicate) was made, but the figure emitted a dull but noticeable white light. D.H. could only see the upper torso and head, but was certain that the figure was fully 7.5 feet tall. Its face was very human-like except that it had the usual 'gray ET' attributes of a small slit for a mouth, no ears and a tiny nose.

The eyes were perfectly rounded –not almond-shaped as is true of the 'classic gray ET' –and seemed large. No hair was visible. Its color was grayish-green and its skin was slightly pock-marked, as best he could recall. He was unable to see the lower part of the torso through the mirror; however it was wearing no noticeable garments.

The room could not have been entered through its one door or the small crank-opened window behind the television set. He looked for and found no signs of forced entry after the [ethereal] 'being' simply disappeared after about 5 seconds. On December 4, the witness noticed a large scar on his rear upper leg of unknown origin.

The November 11, 2004 Anchorage ET encounter is directly linked with HHO plasma-cloaked spacecraft transiting to and from the underwater base below Fire Island, submerged a few miles to the west (above). The original island was modified to give the impression of the head of an albatross, with the slightly curved beak formed by an array of levitation sledline trackways that converge at the termination of the beak point.

Invasive domestic encounters with ET humanoids such as the 2004 incident experienced near Anchorage represent strong indications that electronic dissolution of memory was utilized to preclude any recollection by the subject regarding a series of related UFO abductions that have taken place over many decades.

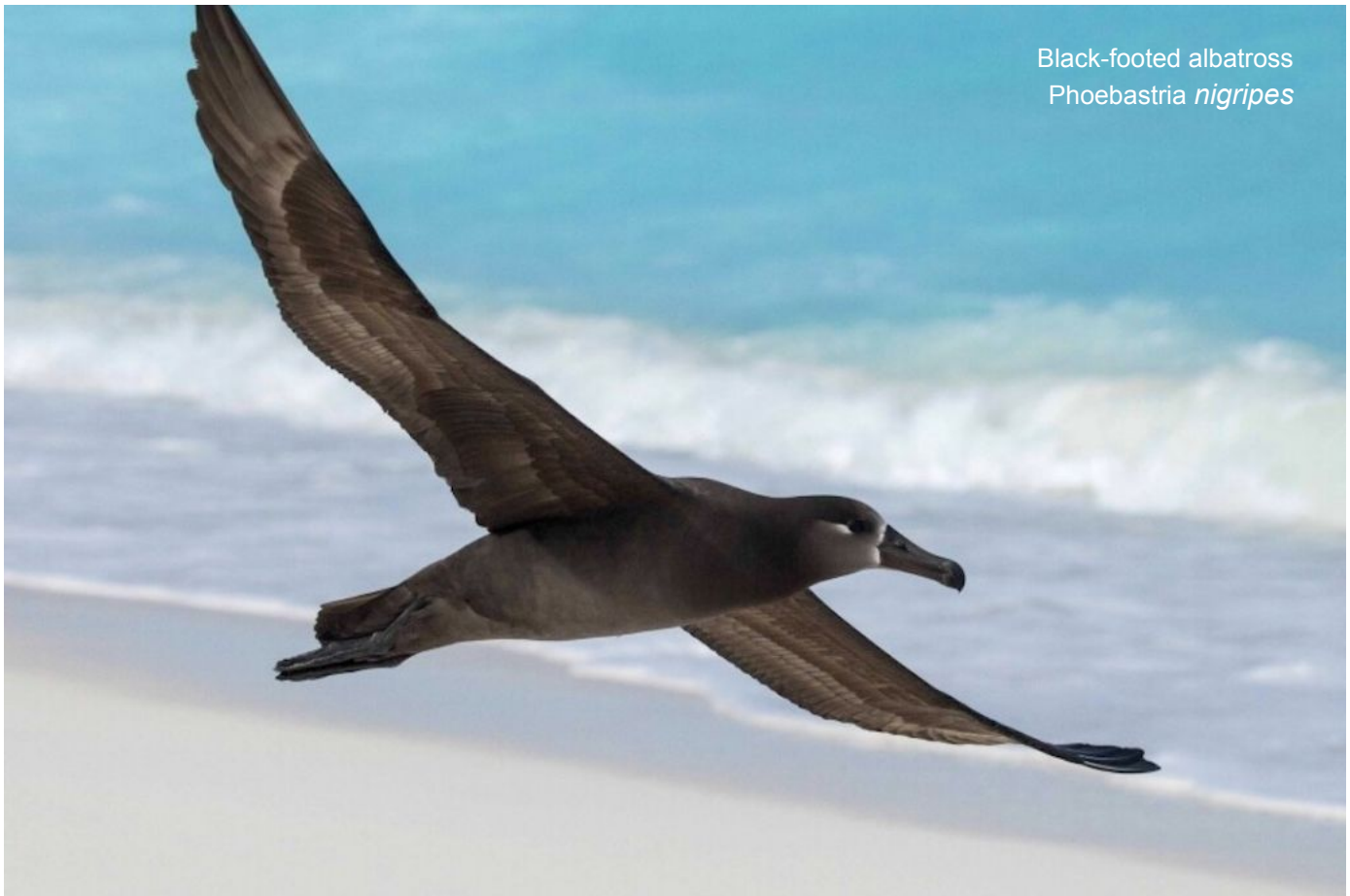
The Anchorage ET encounter case of D.H. conforms to a predominant pattern of hyperdimensional activity related to the ET-human hybridization agenda, involving semen extraction from human male subjects and the concurrent use of human females as surrogate mothers for hybrid fetal extraction after partial gestation periods of just a few months. Memories of each abduction event are serially erased immediately after each episode, leaving only faint, residual memories registered in the subconscious regions of the occipital lobe.

According to high-level psychic sources, cosmic laws of consciousness dictate that unwitting subjects of serial UFO abductions by ET humanoids must be signaled in some form –as an overt indication of their having been abducted, which in some cases involves being allowed to retain the memory of an interaction with the ET abductor(s). In other cases, physical duplicates of personal items appear in the victim’s home, or token items relating to the abductions are placed in locations where they will be found and spark inquiry.



Samudra levitation circuit temple and underwater UFO base at Fire Island, west of Anchorage, Alaska (61.125656°N, 150.273317°W, above) is located 6,155 miles from the Great Pyramid of Giza, Egypt; comprising 24.73% of Earth’s mean circumference ^(309/1250). This resonant distance interval reflects the values of Fibonacci #594 (6,154.22... x 10⁻¹²¹) in miles and Fibonacci #817 (24.740... x 10⁻¹⁷⁰) in percent.

Aleut culture recognizes the black-footed albatross (*Phoebastria nigripes*, below) as a symbol of fertility, harmony and monogamy. Albatrosses typically form monogamous mating pairs for one or more breeding seasons, as one of the pair leaves the nest for long periods of time seeking fish schools. The exceptional long-distance flight capability of the albatross was closely associated with interplanetary space-travel.



Black-footed albatross
Phoebastria nigripes

More sinister symbolism can be readily seen at Alaska's Fisher Caldera, where shorelines were modified for the rapid transit of levitation sleds around the lake's perimeter. The southeast shoreline was designed to evoke an impression of *the head of a tall grey ET in profile*. The figure is wears an antigravitic flight-suit fitted with a cape, akin to an inflatable bodysuit (overleaf). Many UFO encounters include descriptions of flight suits with a series of horizontal tubular bands –as emulated by the 'Michelin-Man' corporate mascot.

Flight suits are body-formed cryogenic systems that generate ultra-cold hydrino plasma within each of the wide, inflatable bands. Descriptions of flight suits include harnesses or long capes that apparently aid in the induction of the mass-nullification effect for antigravitic propulsion. US Army weather observer Charles Hall gave vivid descriptions of inflatable flight suits used by the tall white ETs at Dogbone Lake, Nevada.

In one of his recent interviews, Hall revealed several significant details concerning the tall whites' flight suit technology that employ radioactive elements. Hall compared the short α -particle trails produced by radium emissions (in a cloud chamber) with the much longer α -particle trails he witnessed emanating from the tall whites' luminous flight suits –*in open air, at very close range*. The α -particle radiations of the glowing flight suits were made visible by the formation of a cold plasma envelope known as a *Bose-Einstein condensate*.

Iconographic technology references confirm that such perfectly contoured shorelines are not byproducts of natural volcanic activity, but instead were manufactured as artificial firestone trackways for high-velocity transport systems. A sharp point was built as a conjunction of levitation sledline arcs running along the southwest shoreline of Fisher Caldera, representing the crested head of a cedar waxwing (overleaf). This design format closely replicates the waxwing profile of Momo-paksa sledline temple at Point Hope, Alaska.



Tall grey ET, flight suit motifs
Beringia - Fisher Caldera, Alaska

Laghima-Vasanam levitation sledline temple and underwater UFO base at Fisher Caldera, Alaska (54.70373°N, 164.305169°W, above) is 4,495 miles from the submerged Atlant Pyramid off Florida, comprising 18.06% of Earth's mean circumference ($\frac{9}{50}$). This resonant distance interval reflects the values of Fibonacci #67 (4,494.55... x 10⁻¹⁰) in miles and Fibonacci #735 (18.048... x 10⁻¹⁵³) in percent, securing ULF receptivity.

Crested waxwing head motif
Beringia - Fisher Caldera, Alaska



Shark tooth, dorsal fin motifs
Beringia - Stag Point, Alaska



Tantunaga levitation sledline temple and underwater UFO base at Stag Point, Alaska (54.9810034°N, 162.30183°W, above) is located 6,527 miles from the Great Pyramid, comprising 26.22% of Earth's mean circumference ($^{131}/_{500}$). This resonant distance interval reflects the values of Fibonacci #1843 ($6,527.33... \times 10^{-382}$) in miles and Fibonacci #664 ($26.200... \times 10^{-138}$) in percent. In addition to nonlinear radial distance alignment, the site also displays exact placement at 55 North latitude, ensuring highly efficient reception of planetary infrasound focused by the octagonal symmetry of the Orion Pyramid Complex.



Shark tooth
Fossilized

In Sanskrit, 'tantunaga' signifies "shark". This submerged geopolymer structure was designed with the smooth, triangular forms of the dorsal fin or the tooth of a shark (at left). The shark's tooth sledline motif also indirectly references the pointed, triangular teeth of the nimerigar gnome ET humanoid species which closely resemble those of sharks.

Sharks represent a dominant predator in marine ecosystems that is honored in ancient indigenous cultures around the world as symbols of power, strength, fearlessness, resilience and enforcers of natural order, finding association with ancestral guardianship. The Atlantean high culture also recognized the amazing natural abilities of sharks, including their superb olfactory acuity and heightened electrosensitivity used for prey detection at distances and in low visibility conditions.

Another example of predatory symbolism seen among the design motifs of levitation sledline temples in Beringia has been linked with an August, 2003 nighttime encounter with grey ETs near Seward, Alaska:

Several youngsters were out... trying to snag salmon in the tidal pools late one night (it was very light out, just like twilight) when they saw on a field what they could only describe as 'stick people' about three feet high, with large heads and eyes that reflected greenish light when the youngster shone their flashlights on them.

The terrified youngsters felt that they were being stalked as they saw 15 pairs [of eyes] coming towards them. At this point the kids made a mad run for the main road... [where] they confronted at least 15 to 20 more 'stick people' hiding in the tall grass. Thankfully, the humanoids then ran towards the heavy brushy area and disappeared from sight. Another adult witness reported experiencing unexplained loud 'ringing' in his ears as he visited the area.

This disturbing ET encounter that took place on the coast south of Seward matches the known physiology of the short greys, which transit to and from an underwater UFO base at nearby Sandspit Point, occupying Atlantean levitation sledline temples that were originally designed as a pair of squinting eyes (below).



Kekaraksa levitation sledline temple and underwater UFO base at Sandspit Point south of Seward, Alaska (59.936488°N, 149.313170°W, above) is located 6,238 miles from the Great Pyramid, comprising 25.06% of Earth's mean circumference ($\frac{1}{4}$). This resonant interval reflects the values of Fibonacci #307 (6,452.38... x 10⁻⁶⁰) in miles and Fibonacci #61 (25.04... x 10⁻¹¹) in percent, for securing efficient infrasound reception. Placement near 60 North latitude confers enhanced ionization from atmospheric HHO plasma sources.

The Classical Sanskrit site name 'Kekaraksa' literally means "squinting eyes", describing this submerged complex. These artificial stone structures at Sandspit Point were designed to show symmetry in the curving sledlines embedded into the shorelines on either side of the rugged, mountainous island. This pair of arching sledline temples also evokes the impression of a pair of bird wings extended in flight.

Hundreds of similar submerged sledline temples can be easily distinguished as levitation sled trackways, showing the same format of artificial isthmus and peninsular constructions now recognized in their proper context; as Atlantean megastructures built in preparation for the sites' partial submergence during the present period. The future lowering of global sea levels will surely reveal more ancient monumental sites.